

If the pattern has a double line around it, the seam allowances are included.

**Note:** By default, seam allowances are NOT included (single line) and will need to be added when laying out and cutting details.

Seam Allowance: 1 cm on all seams; hem guidelines are printed on pattern.

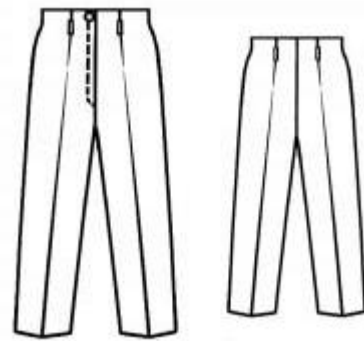
**Important!** Please print all the paper patterns and lay them out at the width of fabric you plan to use (usually from 90 to 150 cm) to see how much fabric you will need.

Don't forget to take into account pieces to be duplicated or cut on a fold. When sewing the garment, pay attention to notches. They must match up with corresponding pieces.

## 5126 Trousers with high waist

Recommendations on fabric: suitable for natural or mixed suit fabric of 150 cm width  
You will also need: 1 zipper of 22 cm length; 1 button, fusible interfacing

### CUTTING:



The word, "beam" used on some patterns means "straight of grain". Some pieces will be cut on the fold, this is noted on the pattern piece. Mark all notches and other design features such as darts, pleats etc. from the pattern onto your fabric.

Seam Allowance: 1 cm on all seams, 2 cm on hem of pants.

### Main fabric:

1. Front one-piece with facing – cut 2
2. Back one-piece with facing – cut 2
3. Belt loop – cut 4
4. Button catch – cut 1

Fusible interfacing: facing details.

### INSTRUCTIONS:

1. Apply the interfacing to wrong side of one-piece facings.

2. Sew darts. Press darts toward center.
3. Sew side seams. Sew leg inside seams. Press allowances apart. Sew front and back center seams, leaving zipper opening unsewn. Press allowances apart from the top to where curve begins.
4. Zipper: Press one-piece facing for zipper onto wrong side. Sew the zipper under the closure allowance edge (left side) along the edge. Sew zipper free tape to right side, to one-piece facing. Fold the button catch in half, sew it along upper and lower short ends. Topstitch the zipper closure one-piece facing on the button catch on the left part of the trousers. Sew along the garment right edge, catching the facing.
5. Trouser waist: Turn one-piece facing onto wrong side, then press seam allowance under. Turn facing from inside, then sew on the zipper tape. Tack facings lower edges to seam allowances and darts depths.
6. Make belt loops. Topstitch belt loops on trousers according to marks.
7. Make the buttonhole on right front, sew the button on left.
8. Pant leg hem: Turn hem allowances onto wrong side, then sew by hand.

Congratulations, your trousers is ready! :)