

If the pattern has a double line around it, the seam allowances are included.

**Note:** By default, seam allowances are NOT included (single line) and will need to be added when laying out and cutting details.

Seam Allowance: 1 cm on all seams; hem guidelines are printed on pattern.

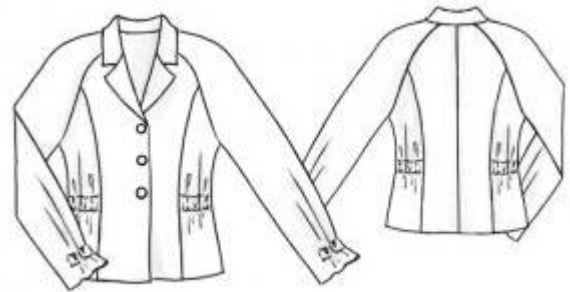
**Important!** Please print all the paper patterns and lay them out at the width of fabric you plan to use (usually from 90 to 150 cm) to see how much fabric you will need.

Don't forget to take into account pieces to be duplicated or cut on a fold. When sewing the garment, pay attention to notches. They must match up with corresponding pieces.

## 5154 Blouse with raglan sleeves and lapel collar

Recommendations on fabric: silk of 150 cm width.

You will also need: fusing; 3 buttons; elastic braid of 50 cm length



### CUTTING:

The word, "beam" used on some patterns means "straight of grain". Some pieces will be cut on the fold, this is noted on the pattern piece. Mark all notches and other design features such as darts, pleats etc. from the pattern onto your fabric.

### Main fabric:

1. Middle front part – 2 pieces
2. Side front part – 2 pieces
3. Middle back part – 2 pieces
4. Side back part – 2 pieces
5. Front sleeve – 2 pieces
6. Back sleeve – 2 pieces
7. Front band – 2 pieces
8. Collar – 2 folded pieces
9. Coulisse – 1 piece
10. Sleeve coulisse – 2 pieces
11. Back neckline facing – 1 folded piece

Fusing: front band, outer collar, back neckline facing.

## INSTRUCTIONS:

1. Cut elastic braid into 4 pieces: 2 pieces of 15 cm length for sides and 2 pieces of 10 cm length for sleeves.
2. Stitch middle back seam and back relieves.
3. Stitch front relieves.
4. Stitch front/back sleeves to front/back parts correspondingly (right sides together).
5. Lay front part on back part. Stitch the coulisse to wrong side. Stitch elastic braids, fix at one end. Pull another end till necessary length and fix, too.
6. Stitch sleeve lower edge and side edge with one seam.
7. Stitch the coulisse to wrong side of front/back side parts. Stitch the elastic braid in the same way as to sleeves.
8. Stitch and process the collar along outer contour and tack long open edges into neckline. Stitch back neckline facing to front bands. Lay front bands and facing on the garment right sides together and overstitch along edgings, lapels and neckline catching the collar.
9. Turn front bands and facing wrong side out, tack, press. Sew facing's inner edges to seam allowances.
10. Neaten garment/sleeve hems, fold into wrong side, and then sew by hand.
12. Make buttonholes into right front edgings, sew buttons on left one.

Congratulations, your blouse is ready! :)