

If the pattern has a double line around it, the seam allowances are included.

Note: By default, seam allowances are NOT included (single line) and will need to be added when laying out and cutting details.

Seam Allowance: 1 cm on all seams; hem guidelines are printed on pattern.

Important! Please print all the paper patterns and lay them out at the width of fabric you plan to use (usually from 90 to 150 cm) to see how much fabric you will need.

Don't forget to take into account pieces to be duplicated or cut on a fold. When sewing the garment, pay attention to notches. They must match up with corresponding pieces.

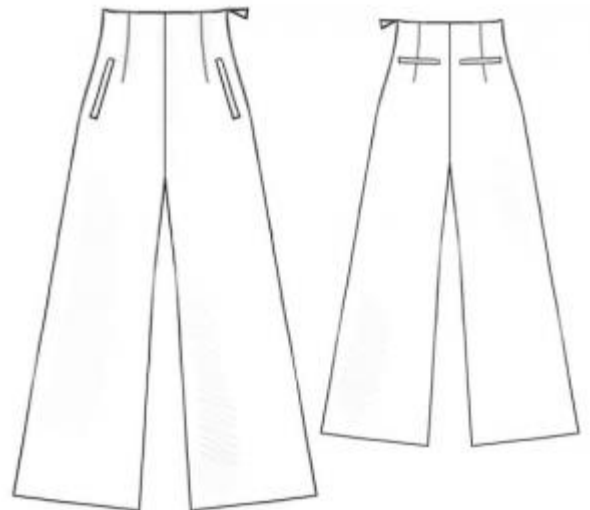
5155 High waisted trousers with wide legs

Recommendations on fabric: linen of 150 cm width.

You will also need: fusing; 1 zipper

CUTTING:

The word, "beam" used on some patterns means "straight of grain". Some pieces will be cut on the fold, this is noted on the pattern piece. Mark all notches and other design features such as darts, pleats etc. from the pattern onto your fabric.



Main fabric:

1. Front part – 2 pieces
2. Back part – 2 pieces
3. Back facing – 1 folded piece
4. Front facing – 1 folded piece
5. Pocket facing – 4 pieces
6. Back valance – 2 pieces
7. Front large sacking – 2 pieces
8. Front small sacking – 2 pieces

Fusing: back/front facing, pocket facing.

INSTRUCTIONS:

1. Apply the fusing to wrong side of back/front facing, pocket facing.
2. Stitch darts, press depths toward the center.
3. Apply fusing stripe of 4 cm width on wrong side of back parts (above pocket marking). Press pocket facings along the center right side out. Pin the facing to marked pocket entrance (lower, with facing's edge to marked line), pin the sacking above, with sacking's edge to marking. Stitch at 1 cm from the line. Cut back parts between stitches, diagonally at stitch ends. Do not cut through facings and sackings! Press seam allowances toward the garment. Turn facings to wrong side through slit to make a neat frame, then tack. Topstitch right side along the seam joining the facing. Turn small triangle at slit ends into wrong side and stitch strictly to facings between upper stitch ends and lower stitch ends. On wrong side: stitch sacking's free ends to facing joining seams allowance, press sackings downward, adjust and stitch together.
4. Do the same for front slit pocket. Stitch large sacking along marked line of sacking join. Stitch the small sacking to facing's joining seams allowance.
5. Stitch out seams and instep seams excluding closure slit. Neaten seam allowance and press them apart. Stitch middle seam.
6. Stitch the zipper with its teeth hidden.
7. Stitch facings together excluding left side seam. Lay the facing on the pants and overstitch along upper edge. Fold the facing into wrong side and press it. Fold facings short edges under and fix them to zipper braid.
8. Press pants hems into wrong side, fold edges under and sew by hand.

Congratulations, your trousers is ready! :)