

If the pattern has a double line around it, the seam allowances are included.

Note: By default, seam allowances are NOT included (single line) and will need to be added when laying out and cutting details.

Seam Allowance: 1 cm on all seams; hem guidelines are printed on pattern.

Important! Please print all the paper patterns and lay them out at the width of fabric you plan to use (usually from 90 to 150 cm) to see how much fabric you will need.

Don't forget to take into account pieces to be duplicated or cut on a fold. When sewing the garment, pay attention to notches. They must match up with corresponding pieces.

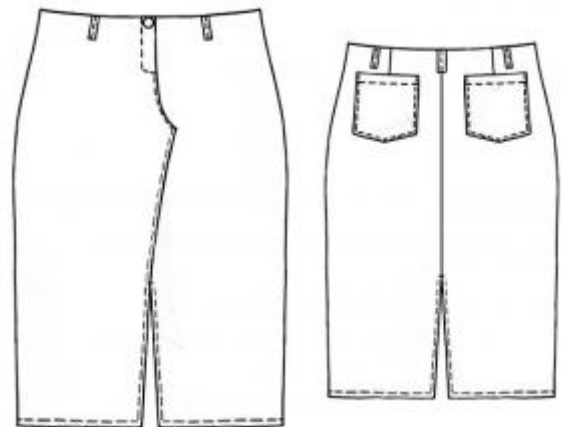
5157 Denim skirt

Recommendations on fabric: stretch denim of 150 cm width.

You will also need: fusible interfacing, zipper, 1 button, contrast knits for topstitching.

CUTTING:

The word, "beam" used on some patterns means "straight of grain". Some pieces will be cut on the fold, this is noted on the pattern piece. Mark all notches and other design features such as darts, pleats etc. from the pattern onto your fabric.



Main fabric:

1. Back panel – 2 details
2. Front right panel - 1 detail
3. Front left panel - 1 detail
4. Back panel facing - 1 folded detail
5. Front right panel facing - 1 detail
6. Front left panel facing - 1 detail
7. Patch pocket - 2 details
8. Belt loop – 6 details (10 cm length and 3 cm width taking into account allowance)
9. Strengthener – 1 folded detail

Fusible interfacing: facing details and strengthener.

INSTRUCTIONS:

1. Strengthen the facings and strengthener with fusing (press thermal strengthener on the left side with hot iron).
2. Sew back panels darts and press them to center. Sew the central back seam together up to the cutting mark. Press it apart. Face and topstitch the slit on 1 mm width from the edge.
3. Press the upper edge of the pocket upwards, fold the edge inside on 1 0.5 mm and topstitch on 1 cm from the edge. Press pocket allowance inside, coincide it with corresponding lines on the panels and topstitch it on 1 mm.
4. Face the central edges of front panels, fold them right sides inside and sew the central seam from the fly front 3-4 cm downwards.
5. Zipper. Press the one-piece right panel facing for zipper to wrong side on front central line, 1 cm from the edge at left panel. Press strengthener along the center right side out, work open edges. Topstitch zipper under closure allowance from left side to edge so that teeth are closely to the bend. Lay strengthener with its bend to the center so that worked edge hides zipper band. Pin closure split coinciding front center lines. Topstitch free zipper band to closure right side facing; do not catch front panel fabric. Topstitch front right panel along closure on the marking, capturing facing and folding strengthener out. Stop stitching on 1.5-2 cm before center seam. Then fold strengthener to its place and continue stitching up to seam. Fold in center edge of right front panel and topstitch along the mark to left panel overlapping topstitch the slit mark. Topstitch left side of slit.
6. Sew front facings to back one alongside edges. Press allowances out. Face the hem. Fold facings with upper edge right sides inside and work them. Fold them into right side, sew short ends and topstitch the upper edge on 1 mm.
7. Press hem over along hemline and topstitch it.
8. Work a buttonhole into the right front panel. Sew button to left front panel.

Congratulations, your skirt is ready! :)