

If the pattern has a double line around it, the seam allowances are included.

Note: By default, seam allowances are NOT included (single line) and will need to be added when laying out and cutting details.

Seam Allowance: 1 cm on all seams; hem guidelines are printed on pattern.

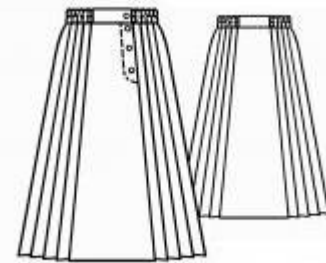
Important! Please print all the paper patterns and lay them out at the width of fabric you plan to use (usually from 90 to 150 cm) to see how much fabric you will need.

Don't forget to take into account pieces to be duplicated or cut on a fold. When sewing the garment, pay attention to notches. They must match up with corresponding pieces.

5159 Long pleated skirt. Free sewing pattern.

Recommendations on fabric: soft wool of 150 cm width.

You will also need: waistband elastic of 3.5 cm width, fusible interfacing, 4 buttons



CUTTING:

The word, “beam” used on some patterns means “straight of grain”. Some pieces will be cut on the fold, this is noted on the pattern piece. Mark all notches and other design features such as darts, pleats etc. from the pattern onto your fabric.

Main fabric:

1. Center front - cut 1 on fold
2. Center back- cut 1 on fold
3. Side front /back panels - cut 2 of 85 cm length each (side part widths depend on waist measurement)

waist girth of 62-67 cm: 84 cm width,

waist girth of 68-75 cm: 96 cm width,

waist girth of 76-83 cm: 108 cm width,

waist girth of 84-95 cm: 120 cm width,

waist girth of 96-107 cm: 132 cm width,

waist girth of 108–119 cm: 144 cm width.

3. Waistband - cut 1 of fabric and 1 of fusible interfacing

*waistband length: skirt upper edge length plus 4 cm for closure, waistband width is 8 cm

in cutting
(4cm in ready garment)

INSTRUCTIONS:

1. Apply fusible interfacing to waistband, except on sides where elastic will be inserted.

ATTENTION:

Press pleats on side parts of front and back panels. The simplest way is to have pleats made by a professional: triple pleats, visual pleat width is 4 cm. It means that to make a pleat of 4 cm width you need 12 cm of material, i.e. 4 cm is pleat width (visual width) and 8 cm is pleat depth. For first pleats from right edge of left panel you need a half of pleat depth (4 cm) plus seam allowance. For last pleat from left edge, mark visual pleat part of 4 cm width. After visual part, you will need to pleat at the middle part of panel half depth of pleat plus seam allowance. Face panel hems before you have them pleated.

2. Hem the front and back panels.

3. Topstitch pleats on 19.5 cm from upper edge on the wrong side of pleated panels. Press the fold of front panel pleat to wrong side.

3. Topstitch the left side of front panel middle part along the marking. Work longitudinal buttonholes under the markings.

4. Pin middle parts of front and back panels with pleated panels so that the pleat of the front middle panel coincides with the marking of pleated panel visible part.

5. Sew the inner bend of pleats. Leave the vent open on the front panel middle part left side. Topstitch the outer bend of pleat on 19.5 cm from the upper edge.

6. Press seam allowance of vent of side panel to wrong side and topstitch on 0.5 cm width. Topstitch pleat depth at vent lower end, from pleat bend, 5 cm along seam line.

7. Sew waistband to waistline edge. Press the seam allowance of the unstitched long edge toward the wrong side.

8. Fold waistband along center line at the ends, right sides together and sew short ends. Trim corners. Pull corners out so they are square.

9. Press seam toward waistband. Trim and grade seams as needed. Press along center line so that waistband-facing is toward inside and turned edge meets up with the edge of the seamline. Slipstitch in place.

10. For the elastic casing over the pleated area, cut elastic into 2 pieces, insert these pieces into casing and topstitch to waistband at pleat and closure allowance level. Topstitch opened waistband lower bend in joining seam. Topstitch waistband on the center of each elastic casing between cross stitches, stretching elastic.

11. Work 1 buttonhole on waistband and sew buttons under buttonholes.

Congratulations, your skirt is ready! :)