

If the pattern has a double line around it, the seam allowances are included.

Note: By default, seam allowances are NOT included (single line) and will need to be added when laying out and cutting details.

Seam Allowance: 1 cm on all seams; hem guidelines are printed on pattern.

Important! Please print all the paper patterns and lay them out at the width of fabric you plan to use (usually from 90 to 150 cm) to see how much fabric you will need.

Don't forget to take into account pieces to be duplicated or cut on a fold. When sewing the garment, pay attention to notches. They must match up with corresponding pieces.

5200 Spaghetti Strap Dress with Bias Cut and Organza Inserts

Recommendations on fabric: crepe-de-chine of 150 cm width.

You will also need: organza; 1 zipper.

CUTTING:

The word, "beam" used on some patterns means "straight of grain". Some pieces will be cut on the fold, this is noted on the pattern piece. Mark all notches and other design features such as darts, pleats etc. from the pattern onto your fabric.

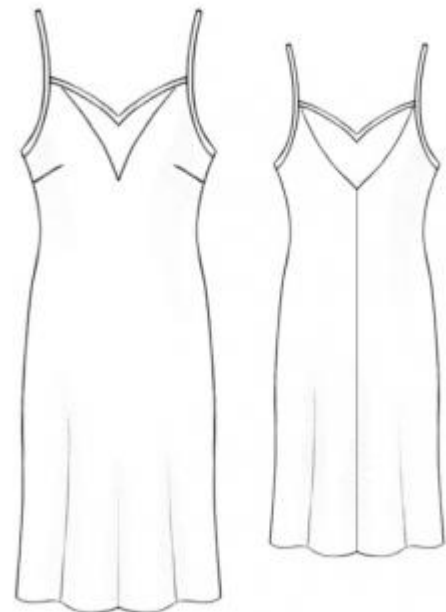
Seam allowances: hem 2.5 cm; all over seams 1 cm.

Main fabric:

1. Back – cut 2
2. Front – cut 1 on fold
3. Armhole bias binding – cut 2
4. Neckline bias binding – cut 2

Organza:

1. Front insert – cut 1 on fold
2. Back insert – cut 1 on fold



INSTRUCTIONS:

1. Sew front darts. Press towards hem. Sew center back seam.
2. Sew inserts to front and back, right sides together. Press seams towards the garment.
3. Sew left side seam from zipper notch to hem. Press seam apart, including opening for zipper. Sew in zipper. Sew right side seam. Press seam apart.
4. Press bias binding in half lengthwise, right sides out. Unfold, then fold edges to the center, fold again along the center. Trim dress upper edge and armhole seam allowances to 0.5 cm. Insert upper edges into the prepared bias binding and topstitch at 1 mm from the lower fold.
5. Trim armholes with bias binding; begin at the side seam, sew to the back, form a strap, then continue sewing along the front, stopping at the side seam.
6. Turn hem seam allowance under and topstitch.

Congratulations, your dress is ready! :)