

If the pattern has a double line around it, the seam allowances are included.

Note: By default, seam allowances are NOT included (single line) and will need to be added when laying out and cutting details.

Seam Allowance: 1 cm on all seams; hem guidelines are printed on pattern.

Important! Please print all the paper patterns and lay them out at the width of fabric you plan to use (usually from 90 to 150 cm) to see how much fabric you will need.

Don't forget to take into account pieces to be duplicated or cut on a fold. When sewing the garment, pay attention to notches. They must match up with corresponding pieces.

5257 Silk kimono robe

Recommendations on fabric: natural or synthetic silk, cotton flannel.

You will also need: atlas.

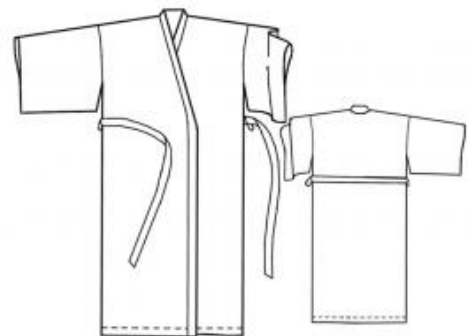
CUTTING:

The word, "beam" used on some patterns means "straight of grain". Some pieces will be cut on the fold, this is noted on the pattern piece. Mark all notches and other design features such as darts, pleats etc. from the pattern onto your fabric.

Seam allowances: all seams 1 cm.

Main fabric:

1. Pocket bag – 4 pieces
2. Back – 1 folded piece
3. Front – 2 pieces
4. Belt – 1 piece
5. Front lath – 1 piece
6. Sleeve – 2 pieces
7. Carrier – 2 pieces.



INSTRUCTIONS:

1. Make narrow belt loops and sew them to the front pieces between the cross marks.
2. Place the pocket bags right sides together with the pocket opening seam allowances and stitch exactly between the marks.
3. Sew the shoulder seams and press them toward the back.
4. Sew the side seams from the second mark to the hem, stitching the pocket bags together at the same time.
5. Sew the sleeve seams according to the markings. Set the sleeves into the armholes, matching the second marks.
6. Fold the armhole and sleeve raw edges to the wrong side and topstitch.
7. Fold the band in half lengthwise, right sides together, and stitch the short ends. Turn the band right side out and sew it to the garment. Neaten the seam.
8. Press the hem to the wrong side and topstitch.
9. Sew the belt and topstitch 0.1 cm from the edge.

Congratulations – your robe are finished! :)