

If the pattern has a double line around it, the seam allowances are included.

Note: By default, seam allowances are NOT included (single line) and will need to be added when laying out and cutting details.

Seam Allowance: 1 cm on all seams; hem guidelines are printed on pattern.

Important! Please print all the paper patterns and lay them out at the width of fabric you plan to use (usually from 90 to 150 cm) to see how much fabric you will need.

Don't forget to take into account pieces to be duplicated or cut on a fold. When sewing the garment, pay attention to notches. They must match up with corresponding pieces.

5259 Bathrobe with raglan sleeves

Recommendations on fabric: thick double-sided silk material.

You will also need: interfacing.

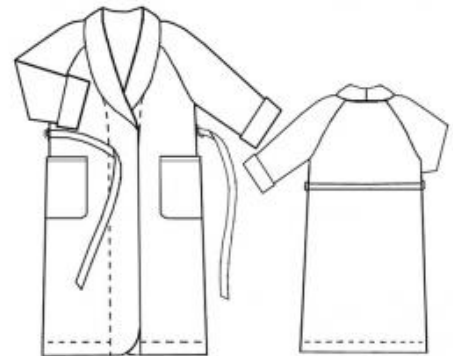
CUTTING:

The word, "beam" used on some patterns means "straight of grain". Some pieces will be cut on the fold, this is noted on the pattern piece. Mark all notches and other design features such as darts, pleats etc. from the pattern onto your fabric.

Seam allowances: all seams 1 cm.

Main fabric:

1. Back – 1 folded piece
2. Pocket – 2 pieces
3. Front – 2 pieces
4. Front facing – 2 pieces
5. Cuff – 2 pieces
6. Back sleeve – 2 pieces
7. Front sleeve – 2 pieces
8. Belt – 1 folded piece



Interfacing:

1. Front facing – 2 pieces
2. Cuff – 2 pieces

INSTRUCTIONS:

1. Fold the top pocket self-facing to the right side and stitch it to the side edges of the pocket. Turn this and all other seam allowances to the wrong side according to the pattern. Stitch the pocket top edge. Topstitch the pocket to the garment.
2. Sew the sleeves to the front and back pieces. Sew the upper and underarm sleeve seams. Sew the side seams. Sew the cuff side seams and attach the cuffs to the sleeves.
3. Clip the seam allowances at the front corners diagonally. Sew the center seam of the collar. Sew the collar to the neckline and press the seam allowances open. Sew the center edges of the front facings. Sew the facings to the garment, right sides together, along the lower edges, center front edges, and collar. Turn the facings to the wrong side of the robe. Baste and press the collar.
4. Press the hem to the wrong side and stitch in place.
5. Sew the belt and topstitch it.

Congratulations – your bathrobe are finished! :)