

If the pattern has a double line around it, the seam allowances are included.

Note: By default, seam allowances are NOT included (single line) and will need to be added when laying out and cutting details.

Seam Allowance: 1 cm on all seams; hem guidelines are printed on pattern.

Important! Please print all the paper patterns and lay them out at the width of fabric you plan to use (usually from 90 to 150 cm) to see how much fabric you will need.

Don't forget to take into account pieces to be duplicated or cut on a fold. When sewing the garment, pay attention to notches. They must match up with corresponding pieces.

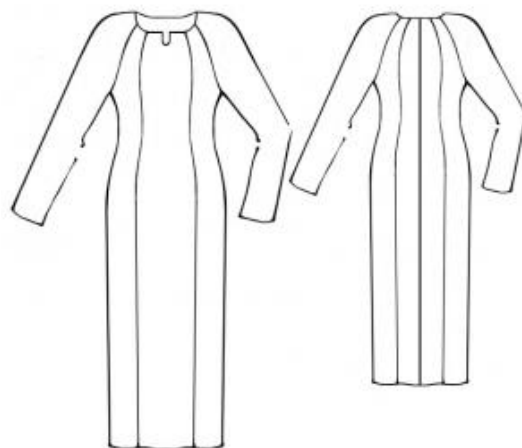
5339 Dress with Sheer Lace Sleeves

Recommendations on fabric: chiffon, elastic guipure.

You will also need: zipper.

CUTTING:

The word, "beam" used on some patterns means "straight of grain". Some pieces will be cut on the fold, this is noted on the pattern piece. Mark all notches and other design features such as darts, pleats etc. from the pattern onto your fabric.



Seam allowances: 1 cm for all seams, 2 cm for hem.

Main fabric:

1. Centre front – 1 piece
2. Side back – 2 pieces
3. Centre back – 2 pieces
4. Side front – 2 pieces

Guipure:

1. Back sleeve – 2 pieces
2. Front sleeve – 2 pieces
3. Binding stripe – 4 cm in width.

Advice: to prevent seam from stiffing, stitch pieces with special (zigzag) stitch. To prevent hem from stiffing neaten it with overlocker and then stitch using double needle. Do the same for all edges must stay elastic. The above is not for industrial manufacturing.

INSTRUCTIONS:

1. Stitch the curved edges of the front and back pieces. Press the front seams toward the center front and the back seams toward the center back.
2. Stitch and neaten the sleeve seams.
3. Stitch and neaten the side seams. Press the side seams toward the back.
4. Sew the sleeves into the armholes.
5. Finish the neckline with a binding strip or ready-made bias binding.
6. Neaten the center back edges. Sew the seam up to the zipper notch. Press the seam open, including the slit. Insert the zipper.
7. Fold the dress and sleeve hems to the wrong side and stitch in place.

Congratulations – your dress are finished! :)