

If the pattern has a double line around it, the seam allowances are included.

**Note:** By default, seam allowances are NOT included (single line) and will need to be added when laying out and cutting details.

Seam Allowance: 1 cm on all seams; hem guidelines are printed on pattern.

**Important!** Please print all the paper patterns and lay them out at the width of fabric you plan to use (usually from 90 to 150 cm) to see how much fabric you will need.

Don't forget to take into account pieces to be duplicated or cut on a fold. When sewing the garment, pay attention to notches. They must match up with corresponding pieces.

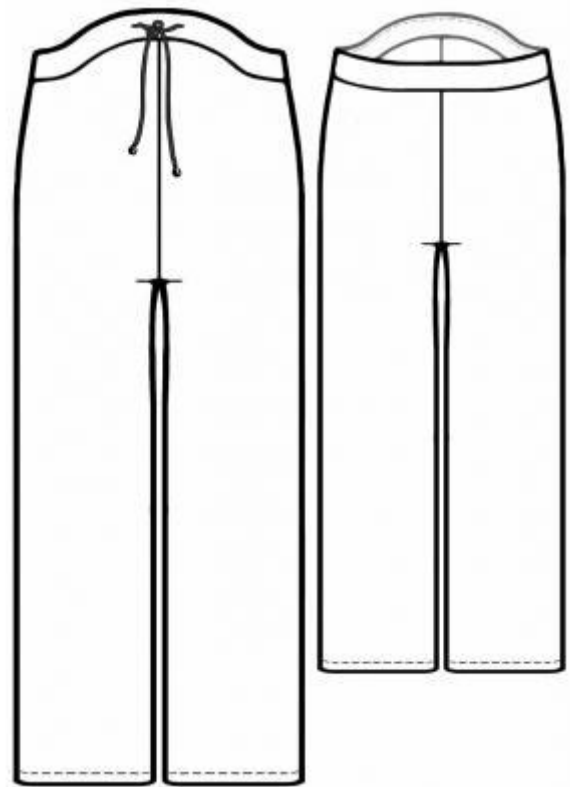
## 5608 Pants with drawstring for pregnant women

Recommendations on fabric: fabric with elastic fibers approx. 1.5 m (sizes 32-40), approx. 2.5 m (sizes 42-54) with a fabric width of 150 cm.

You will also need: Fusible interfacing, decorative cord, tabs.

### CUTTING:

The word, "beam" used on some patterns means "straight of grain". Some pieces will be cut on the fold, this is noted on the pattern piece. Mark all notches and other design features such as darts, pleats etc. from the pattern onto your fabric.



Seam allowances: 1 cm for all seams, 2 cm for hem allowance.

### Main fabric:

1. Side front part – 2 pieces
2. Front part – 2 pieces
3. Back part – 2 pieces
4. Front facing – 2 pieces
5. Back facing – 2 pieces

6. Front sacking – 2 pieces

Fusible interfacing: front/back facings, pocket entrance allowance.

INSTRUCTIONS:

1. Apply the fusing to the wrong side of front/back facing and pocket entrance allowance.
2. Overstitch the front pocket's upper edge with pocket lining and make decorative stitch. Lay pocket lining on the side front part, stitch edges and neat them. Fix side part to front part along upper edge with 3 cm stitch.
3. Stitch side seams and neaten them. Press side seams backwards.
4. Neaten front/middle edges and hems. Stitch inseams and neaten them. Press inseams backwards. Stitch front/middle edges. Make another stitch along crotch seam close to the seam joining front/middle seam.
5. Neaten buttonholes into front upper facing.
6. Stitch side edges of front/back facings, press seams apart. Stitch facings to pants' upper edge and press joining seam towards facings.
7. Neaten lower facings' outer edge. Lay facings on stitches facings right sides together and overstitch upper edge. Topstitch the overstitching on lower facings at 0.2 cm from the seam. Topstitch lower facing's neaten edge on the seam joining upper facing, then press.
8. Press hem allowances into the wrong side and topstitch.
9. Pull the cord into buttonholes and set tabs.

Congratulations, your pants are ready! :)