

If the pattern has a double line around it, the seam allowances are included.

Note: By default, seam allowances are NOT included (single line) and will need to be added when laying out and cutting details.

Seam Allowance: 1 cm on all seams; hem guidelines are printed on pattern.

Important! Please print all the paper patterns and lay them out at the width of fabric you plan to use (usually from 90 to 150 cm) to see how much fabric you will need.

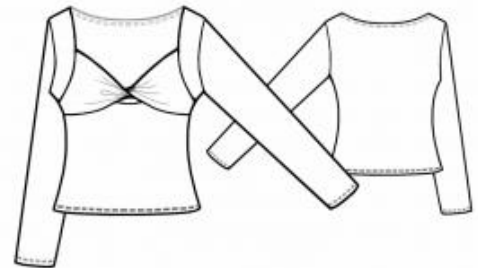
Don't forget to take into account pieces to be duplicated or cut on a fold. When sewing the garment, pay attention to notches. They must match up with corresponding pieces.

5663 Jersey Blouse with Draped Bust

Recommendations on fabric: medium/high stretch-knit jersey (natural or mixed).

CUTTING:

The word, “beam” used on some patterns means “straight of grain”. Some pieces will be cut on the fold, this is noted on the pattern piece. Mark all notches and other design features such as darts, pleats etc. from the pattern onto your fabric.



Seam allowances: all seams 1 cm. 1.5 cm for the hem.

Main fabric:

1. Back – cut 1
2. Lower front – cut 1
3. Upper front– cut 1
4. Front placket – cut 4
5. Sleeve – cut 2

INSTRUCTIONS:

Advice: sew knit pieces with special elastic/zig-zag stitches. If you use an overlock, cut seam allowances to 0.6-0.8 cm width. Topstitch hem allowances with double needle to save elasticity.

1. Clip into the seam allowances on the lower edge of the upper front at the notches.

Serge the upper edge of the upper front and the edge between the notches. Press the seam allowances to the wrong side and topstitch.

2. Place the front plackets right sides together and insert the upper front between them. Sew the plackets and the upper front together, with the seam running between the side edge and the shoulder edge. Press the plackets to the right side. After this step, treat the plackets as a single layer.
3. Clip the seam allowance between the notches on the upper edge of the lower front. Serge the edge, press it to the wrong side, and topstitch.
4. Make one twist in the upper front and sew it to the lower front. Serge the seam and press.
5. Sew the shoulder seams. Press the seams toward the back.
6. Sew the side seams, serge, and press the seams toward the back.
7. Sew the sleeve seams, serge, and press the seams toward the back.
8. Sew the sleeves into the armholes, matching the notches. Serge and press.
9. Serge the lower edge of the garment, the sleeve hems, and the back neckline. Press to the wrong side and topstitch.

Congratulations – your blouse are finished! :)