

If the pattern has a double line around it, the seam allowances are included.

Note: By default, seam allowances are NOT included (single line) and will need to be added when laying out and cutting details.

Seam Allowance: 1 cm on all seams; hem guidelines are printed on pattern.

Important! Please print all the paper patterns and lay them out at the width of fabric you plan to use (usually from 90 to 150 cm) to see how much fabric you will need.

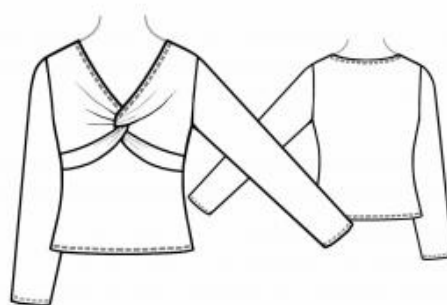
Don't forget to take into account pieces to be duplicated or cut on a fold. When sewing the garment, pay attention to notches. They must match up with corresponding pieces.

5677 Blouse with front draping and V-neckline

Recommendations on fabric: middle/high stretchable jersey (natural or mixed).

CUTTING:

The word, "beam" used on some patterns means "straight of grain". Some pieces will be cut on the fold, this is noted on the pattern piece. Mark all notches and other design features such as darts, pleats etc. from the pattern onto your fabric.



Seam allowances: all seams 1 cm, 1.5 cm for the hem/sleeve hems.

Main fabric:

1. Back part – 1 piece
2. Upper front part – 2 pieces
3. Lower front part – 1 piece
4. Sleeve – 2 pieces

INSTRUCTIONS:

Advice: sew knit pieces with special elastic/zig-zag stitches. If you use an overlock, cut seam allowances to 0.6-0.8 cm width. Topstitch hem allowances with double needle to save elasticity.

1. Sew the shoulder seams of the front and back pieces. Neaten the seams and press them toward the back.
2. Neaten the neckline edge. Turn the seam allowance to the wrong side and topstitch.
3. Neaten the upper straight edge (4–5 cm long) of the lower front piece and the corresponding edge of the upper front piece. Turn the seam allowances to the wrong side and press.
4. Place the curved edge of the left upper front piece right sides together with the corresponding edge of the lower front piece and stitch. Neaten the seam and press. Pull the right front piece through the loop and stitch in the same manner.
5. Fold the lower edge of the upper front piece at the side seam at the notch and secure the upper and lower front pieces together along the side seam.
6. Sew the side seams of the front and back pieces. Neaten the seams and press them toward the back.
7. Sew the sleeve seams. Neaten and press the seams.
8. Set the sleeves into the armholes, matching notches. Neaten and press the seams.
9. Neaten the garment hem and sleeve hems. Turn them to the wrong side, press, and topstitch.

Congratulations – your blouse are finished! :)