

If the pattern has a double line around it, the seam allowances are included.

Note: By default, seam allowances are NOT included (single line) and will need to be added when laying out and cutting details.

Seam Allowance: 1 cm on all seams; hem guidelines are printed on pattern.

Important! Please print all the paper patterns and lay them out at the width of fabric you plan to use (usually from 90 to 150 cm) to see how much fabric you will need.

Don't forget to take into account pieces to be duplicated or cut on a fold. When sewing the garment, pay attention to notches. They must match up with corresponding pieces.

5679 Boat-Neck Dress with Pleated Skirt

Recommendations on fabric: medium-weight natural/mixed dress fabric.

You will also need: invisible zipper, fusible interfacing.

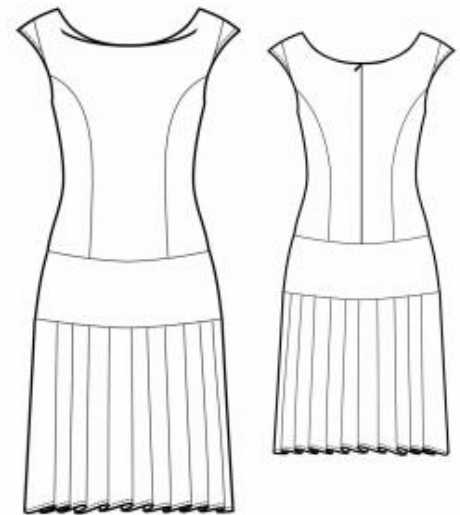
CUTTING:

The word, "beam" used on some patterns means "straight of grain". Some pieces will be cut on the fold, this is noted on the pattern piece. Mark all notches and other design features such as darts, pleats etc. from the pattern onto your fabric.

Seam allowances: all seams 1 cm, 3 cm for garment hem.

Main fabric:

1. Center back– cut 2
2. Side back – cut 2
3. Back waist yoke – cut 1
4. Side front – cut 2
5. Center front – cut 1
6. Front waist yoke – cut 1
7. Sleeve – cut 2



8. Skirt – cut 1
9. Back facing – cut 2
10. Front facing – cut 1

Interfacing: facings

INSTRUCTIONS:

1. Apply interfacing to the wrong side of the front and back facings.
2. Sew the side back pieces to the center back pieces. Serge and press the seams toward the center. Sew the side front pieces to the front pieces. Serge and press the seams toward the center.
3. Serge the center back edges separately. Sew the center back seam from the zipper-end mark to the lower edge of the back. Press the seam open, including the zipper opening. Insert the zipper.
4. Sew the back waist yoke to the upper back. Serge the seam and press toward the yoke. Sew the front waist yoke to the upper front. Serge the seam and press toward the yoke.
5. Sew the shoulder seams and side seams. Serge and press the seams toward the back.
6. Sew the shoulder seams of the facings. Pin the facing to the neckline, right sides together, and sew. Clip into the curves, understitch, and press to the wrong side of the garment.
7. Clip the armholes at the notch marks. Cut a strip of bias tape 4 cm wide and equal in length to the lower segment of the armhole. Fold the bias tape in half lengthwise with the right side out and press. Pin the bias tape to the lower armhole segment, right sides together, and sew. Turn and press the bias tape to the wrong side. Topstitch the seam allowance on the bias tape with a 0.1 cm seam.
8. Press the sleeve edges to the wrong side, fold under, and topstitch. Sew the sleeves into the upper part of the armholes. Serge the seams.
9. Serge the edges of the skirt center back seam separately. Sew the center back seam and press the seam allowances open.
10. Serge the lower edge of the skirt. Press the hem to the wrong side and topstitch.
11. Form and press the pleats on the skirt following the pattern markings. Baste in place.
12. Sew the skirt to the waist yoke. Serge and press the seam toward the yoke.

Congratulations – your dress are finished! :)