

If the pattern has a double line around it, the seam allowances are included.

Note: By default, seam allowances are NOT included (single line) and will need to be added when laying out and cutting details.

Seam Allowance: 1 cm on all seams; hem guidelines are printed on pattern.

Important! Please print all the paper patterns and lay them out at the width of fabric you plan to use (usually from 90 to 150 cm) to see how much fabric you will need.

Don't forget to take into account pieces to be duplicated or cut on a fold. When sewing the garment, pay attention to notches. They must match up with corresponding pieces.

5722 Poncho with Fur Trim

Recommendations on fabric: soft fabric suitable for coats.

You will also need: 4 hooks and eyelets, natural/faux fur, piping for neckline.

CUTTING:

The word, "beam" used on some patterns means "straight of grain". Some pieces will be cut on the fold, this is noted on the pattern piece. Mark all notches and other design features such as darts, pleats etc. from the pattern onto your fabric.

Seam allowances: all seams 1 cm.

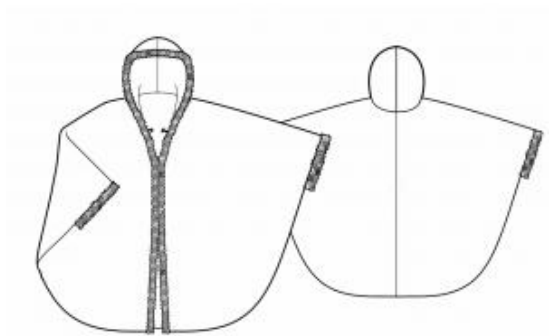
Main fabric:

1. Front part – 2 pieces
2. Back part – 2 pieces
3. Hood – 2 pieces

Fur:

1. Cuff – 2 pieces

Cut (or gather of several pieces) a fur stripe for trimming of 11 cm width. Length is given on patterns.



INSTRUCTIONS:

1. Sew the center back seam. Serge the seam and press it to the left.
2. Sew shoulder seams. Serge and press seams toward the back.
3. Sew hood pieces together. Press the seam to the left. Place a strip of piping along the seam on the wrong side and topstitch, catching the seam allowances. Sew the hood into the neckline. Clip the seam and press it toward the hood. Topstitch another strip of piping above the seam to cover the joining allowances.
4. Clip the seam at the marks on the front and back pieces. Place the front over the back, right sides together, and sew between the marks. Serge the seam and press it. Serge the seam section between the front edge and the first mark on the front, as well as the back seam section between the center back seam and the mark at the lower edge. Fold the serged sections under and topstitch.
5. Fold the cuff in half lengthwise, right side out. Then fold it wrong side out and sew into a ring. Turn the cuff right side out again and press the seam open. Sew the outer edge of the cuff to the poncho. Fold the inner edge of the cuff to the inside and topstitch into the joining seam.
6. Fold the fur trim strip in half lengthwise, right side out. Sew the outer edge of the fur trim to the front edge and hood. Fold the trim to the inside and topstitch along the joining seam.
7. On the wrong side of the poncho, sew eyelets and hooks along the edge of the placket.

Congratulations – your poncho are finished! :)