

If the pattern has a double line around it, the seam allowances are included.

**Note:** By default, seam allowances are NOT included (single line) and will need to be added when laying out and cutting details.

Seam Allowance: 1 cm on all seams; hem guidelines are printed on pattern.

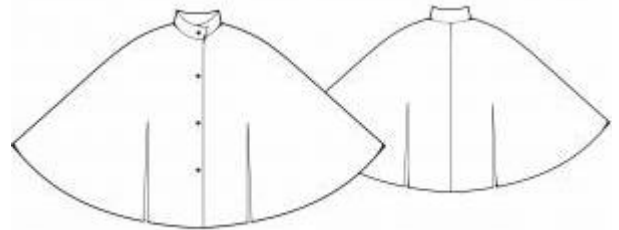
**Important!** Please print all the paper patterns and lay them out at the width of fabric you plan to use (usually from 90 to 150 cm) to see how much fabric you will need.

Don't forget to take into account pieces to be duplicated or cut on a fold. When sewing the garment, pay attention to notches. They must match up with corresponding pieces.

## 5730 Poncho with collar

Recommendations on fabric: wool/ wool blend.

You will also need: fusible interfacing, lining, 4 buttons.



### CUTTING:

The word, “beam” used on some patterns means “straight of grain”. Some pieces will be cut on the fold, this is noted on the pattern piece. Mark all notches and other design features such as darts, pleats etc. from the pattern onto your fabric.

Seam allowance: 3 cm for the hem; 1 cm for other seams.

### Main fabric:

1. Front– cut 2
2. Back – cut 2
3. Collar – cut 2
4. Front facing – cut 2
5. Back neck facing – cut 1

### Lining:

1. Back – cut 2
2. Front – cut 2

\* cut lining same as main fabric pieces excluding width of facings.

Fusible interfacing:

1. Front facing – cut 2
2. Back neck facing – cut 1

INSTRUCTIONS:

1. Apply the fusible interfacing to wrong side of front facings and back neck facing.
2. Sew center back seam. Serge and press seam toward left.
3. Sew shoulder seams. Serge and press toward back.
4. Pin collar right sides together. Sew outer edges of collar; begin and finish at the line of collar stitching. Turn the collar right side out and press.
5. Pin front facing on front right sides together, then sew along center front to notch for collar. Trim corners.
6. Sew shoulder seams of back neck facing and front facing. Press seam allowances apart.
7. Insert the collar between the poncho and facing. Sew outer collar to poncho neckline, sew inner collar to facing. Press seam allowances apart. Turn facing onto wrong side and sew collar joining seam allowances close to seams.
8. Sew lining together, leaving a 15-20 cm opening in one of seams for turning. Pin the lining on the poncho right sides together and sew the lining to facing inner edges. Sew front lower corner. Trim corners.
9. Press the hem onto wrong side. Clip into curves along hem allowance. Sew the lining to garment hem. Turn the poncho right side out and press it. Sew up the opening in the seam. Make decorative stitch parallel to front center line (as marked). Sew buttons.

Congratulations, your poncho is ready! :)