

If the pattern has a double line around it, the seam allowances are included.

Note: By default, seam allowances are NOT included (single line) and will need to be added when laying out and cutting details.

Seam Allowance: 1 cm on all seams; hem guidelines are printed on pattern.

Important! Please print all the paper patterns and lay them out at the width of fabric you plan to use (usually from 90 to 150 cm) to see how much fabric you will need.

Don't forget to take into account pieces to be duplicated or cut on a fold. When sewing the garment, pay attention to notches. They must match up with corresponding pieces.

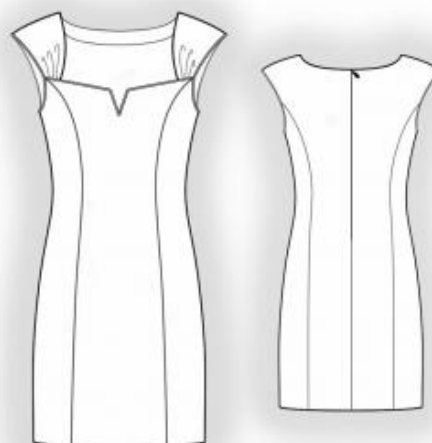
5850 Pinafore Dress with Square Neckline

Recommendations on fabric: natural or mixed fabrics suitable for dresses.

You will also need: blind zipper, piping.

CUTTING:

The word, "beam" used on some patterns means "straight of grain". Some pieces will be cut on the fold, this is noted on the pattern piece. Mark all notches and other design features such as darts, pleats etc. from the pattern onto your fabric.



Seam allowances: along the edge of the dress – 3 cm, all other seams – 1 cm.

Main fabric:

1. Central back part – 2 details
2. Side back part – 2 details
3. Central front part – 1 detail
4. Side front part – 2 details
5. Upper front part – 2 details
6. Lining of front part – 1 detail
7. Neckline facing – 2 details
8. Facing of the front part armhole – 2 details

9. Facing of the back part armhole – 2 details

INSTRUCTIONS:

1. Serge the lower edge of the front lining.
2. Sew a gathering stitch along the lower edge of the upper front and gather the ruffles. Attach piping to the top edge of the front piece, clipping at the corners. Place the front and front lining right sides together, insert the upper front between them, and sew. Turn right side out and press.
3. Sew princess seams on the front piece, press seam allowances toward the center, and serge.
4. Sew darts on the back, pressing the dart bulk toward the center. Sew princess seams on the back, press seam allowances toward the center, and serge.
5. Serge center back edges. Sew the center back seam up to the zipper notch. Insert the zipper. Press the seam allowances open, pressing the zipper area at the same time.
6. Sew shoulder and side seams. Serge and press toward the back.
7. Place the dress and neckline facing right sides together and sew along the neckline edge. Clip seam allowances at curves. Press seam allowance toward the facing and understitch 0.1 cm from the seam.
8. Sew side and shoulder seams of the armhole facings. Serge the outer edge. Place the dress and facings right sides together and sew around the armholes. Clip seam allowances on curves. Press seam allowance toward the facing and understitch 0.1 cm from the seam. Secure at shoulder and side seams.
9. Serge the hem of the dress. Turn the seam allowance to the inside and hand-stitch invisibly.

Congratulations – your dress are finished! :)