

If the pattern has a double line around it, the seam allowances are included.

**Note:** By default, seam allowances are NOT included (single line) and will need to be added when laying out and cutting details.

Seam Allowance: 1 cm on all seams; hem guidelines are printed on pattern.

**Important!** Please print all the paper patterns and lay them out at the width of fabric you plan to use (usually from 90 to 150 cm) to see how much fabric you will need.

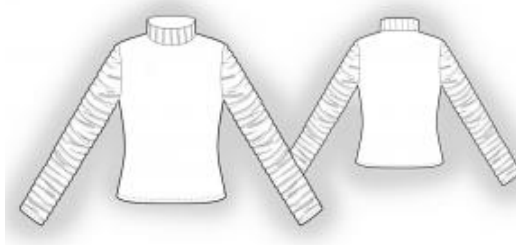
Don't forget to take into account pieces to be duplicated or cut on a fold. When sewing the garment, pay attention to notches. They must match up with corresponding pieces.

## 5866 Turtleneck Blouse with Decorative Sleeves

Recommendations on fabric: middle/high stretchable jersey (natural or mixed).

### CUTTING:

The word, "beam" used on some patterns means "straight of grain". Some pieces will be cut on the fold, this is noted on the pattern piece. Mark all notches and other design features such as darts, pleats etc. from the pattern onto your fabric.



Seam allowances: 1.5 cm for the garment and sleeve hems, 0.7 cm for other seams.

### Main fabric:

1. Front part – 1 piece
2. Back part – 1 piece
3. Back sleeve part – 2 pieces
4. Front sleeve part – 2 pieces
5. Inner collar part – 1 piece
6. Outer collar part – 1 piece

**ATTENTION!** Before starting work, sew the collar into a ring and check that you can put your hand through it.

**OUR ADVICE:** stitch jersey details with special elastic/zig-zag stitches or using a 3- or 4-thread overlock.

#### INSTRUCTIONS:

Advice: sew knit pieces with special elastic/zig-zag stitches. If you use an overlock, cut seam allowances to 0.6-0.8 cm width. Topstitch hem allowances with double needle to save elasticity.

1. Sew shoulder and side seams of front and back. Serge seam allowances and press towards back.
2. Sew the inner collar into a ring. Sew the outer collar into a ring, make pleats. Place the inner and outer collar parts together, wrong sides out, and stitch along the upper edge. Turn right side out and press. Sew the collar into the neckline.
3. Make pleats on the sleeve pieces (the inner pleat edge faces upward). Sew upper and lower sleeve seams. Serge and press seam allowances.
4. Sew sleeves into armholes, matching notches. Serge and press seam allowances.
5. Serge the hem of garment and sleeves. Fold to wrong side, press, and topstitch.

Congratulations – your turtleneck are finished! :)