

If the pattern has a double line around it, the seam allowances are included.

Note: By default, seam allowances are NOT included (single line) and will need to be added when laying out and cutting details.

Seam Allowance: 1 cm on all seams; hem guidelines are printed on pattern.

Important! Please print all the paper patterns and lay them out at the width of fabric you plan to use (usually from 90 to 150 cm) to see how much fabric you will need.

Don't forget to take into account pieces to be duplicated or cut on a fold. When sewing the garment, pay attention to notches. They must match up with corresponding pieces.

5868 Top with V-neck and wing sleeves

Recommendations on fabric: natural/mixed chiffon.

You will also need: lace of 2.5 cm wide, atlas for decoration.

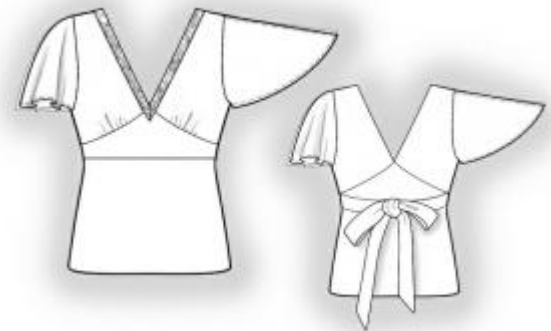
CUTTING:

The word, "beam" used on some patterns means "straight of grain". Some pieces will be cut on the fold, this is noted on the pattern piece. Mark all notches and other design features such as darts, pleats etc. from the pattern onto your fabric.

Seam allowance: back part / front part neckline edges – 1.5 cm, along the edge of the garment – 0 cm, on long edges of lace placket – 0 cm, along the lower edge of front and back parts of sleeve - 0 cm, shoulder edge of sleeve near rounded part - 1 cm and to lower edge it comes to 0 cm. Other seams - 1 cm

Chiffon:

1. Upper back part – 2 details
2. Lower back part – 1 detail
3. Upper front part – 2 details
4. Lower front part – 1 detail
5. Front part of sleeve – 2 details
6. Back part of sleeve – 2 details



Atlas:

1. Belt – 2 details
2. Front part yoke – 1 detail

Lace:

1. Lace placket - 2 details

Advice: cut side, shoulder and sleeve connecting seam up to 0.5 – 0.7 cm when serging.

INSTRUCTIONS:

1. Overstitch upper front part neckline edge with baby seam. To do that press seam allowance onto wrong side at 1.5 cm, stitch at 0.1-0.2 cm off the fold. Cut off seam allowance close to the stitch. Turn inside seam allowance once again and put the stitch on top of previous stitch. Press the seam.
2. Overstitch lower edge of the yoke with baby seam. Fix yoke to lower part front part along upper and side edges.
3. Stitch loosely at 0.5 cm off the edge along the lower edge of upper front part. Gather ruffles between notches. Sew upper and lower front parts together with the yoke. Attention: level edges from side seam, upper front part stays at 2 cm to the corner of lower part. Press the seam downwards and serge.
4. Sew details of lace placket along slanting edge. Press seam apart and serge. Mark a line on upper front part at 0.5 cm off the neckline edge. Put the edge of lace placket to marked line, leveling by that the corner and the notch on the yoke. Topstitch lace.
5. Fold details of the belt in half lengthwise right sides together and overstitch long and slanting edges. Turn the belt out and press.
6. Overstitch back part neckline edge with baby seam. Sew upper and lower parts of back part. Press the seam downwards and serge.
7. Sew shoulder and side edges, inserting the belt into side edge. Serge and press shoulder and side seams onto back part.
8. Sew lower edge of sleeve. Serge and press the seam to back part. Serge hem of sleeve and shoulder edges of sleeve from rounded part up to hem of sleeve with thin rolled seam. Sew section of shoulder seam on the sleeve from rounded part up to the notch.
9. Sew the sleeve into armhole. Serge and press the seam.



Model 5868

pattern from pppp.dk

10. Serge lower edge of the top with thin rolled seam.

Congratulations, your top is ready! :)