

If the pattern has a double line around it, the seam allowances are included.

Note: By default, seam allowances are NOT included (single line) and will need to be added when laying out and cutting details.

Seam Allowance: 1 cm on all seams; hem guidelines are printed on pattern.

Important! Please print all the paper patterns and lay them out at the width of fabric you plan to use (usually from 90 to 150 cm) to see how much fabric you will need.

Don't forget to take into account pieces to be duplicated or cut on a fold. When sewing the garment, pay attention to notches. They must match up with corresponding pieces.

5877 Bolero Jacket with Collar

Recommendations on fabric: natural or mixed suiting fabrics.

You will also need: lining; fusing; 1 button.

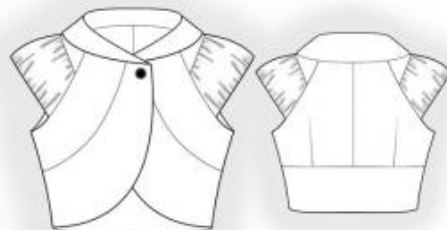
CUTTING:

The word, "beam" used on some patterns means "straight of grain". Some pieces will be cut on the fold, this is noted on the pattern piece. Mark all notches and other design features such as darts, pleats etc. from the pattern onto your fabric.

Seam allowances: all seams 1 cm.

Main fabric:

1. Upper back– cut 2
2. Lower back – cut 2
3. Upper front – cut 2
4. Lower front – cut 4
5. Collar – cut 2
6. Upper sleeve – cut 2
7. Lower inner sleeve – cut 2
8. Lower outer sleeve – cut 2



Lining:

1. Upper back– cut 2
2. Upper front – cut 2
3. Upper sleeve – cut 2

Fusible interfacing:

1. Lower back – cut 1
2. Lower front – cut 2
3. Collar – cut 1

INSTRUCTIONS:

1. Apply interfacing to the listed pieces.
2. Sew darts on the back, press them toward the center. Sew the center back seam and press the seam toward the left. Sew the lower back to the upper back, pressing the seam toward the lower back.
3. Sew the lower front to the upper front, clip into the curves, and press the seam toward the lower front.
4. Make a gathering stitch along the upper and lower edges of the lower outer sleeve and gather the fullness. Pin the lower outer and inner sleeves right sides together and sew along the lower edge. Turn right side out and press. Baste along the top edge, aligning the length. Pin the main fabric pieces and lining pieces of the upper sleeve right sides together, insert the lower part of the sleeve between them, and sew. Turn right side out and press. Then sew as one piece.
5. Sew the sleeves to the back and front, and press the seam allowances.
6. Sew the side seams and press the seam allowances toward the back.
7. Sew darts and the center seam on the lining back. Sew the non-interfaced lower back to it. Sew the interfaced lower front to the front lining. Sew the side seams of the lining and press the seam allowances apart.
8. Pin the lining to the main garment right sides together and sew the lower edge of the left armhole. Clip into the curves. Turn the jacket right side out and sew the lining into the sleeve connecting seam. Sew the right armhole the same way.
9. Pin the main garment with the lining right sides together and sew the edge of the

button stand and the lower edges of the front and back. Clip into the curves and turn the jacket right side out. Secure the lining to the garment along the neckline edge.

10. Pin the collar right sides together and sew along the outer edge. Start and stop stitching exactly at the marked line of the collar connection. Clip into the curves and turn the collar right side out.
11. Sew the lower collar into the neckline. Clip into the curves and press the seam toward the collar. Turn the seam allowance of the outer collar under and topstitch into the connecting seam.
12. Make a buttonhole on the right front and sew a button on the left front.

Congratulations – your bolero jacket are finished! :)