

If the pattern has a double line around it, the seam allowances are included.

Note: By default, seam allowances are NOT included (single line) and will need to be added when laying out and cutting details.

Seam Allowance: 1 cm on all seams; hem guidelines are printed on pattern.

Important! Please print all the paper patterns and lay them out at the width of fabric you plan to use (usually from 90 to 150 cm) to see how much fabric you will need.

Don't forget to take into account pieces to be duplicated or cut on a fold. When sewing the garment, pay attention to notches. They must match up with corresponding pieces.

5907 Variable dress

Recommendations on fabric: well draping natural/mixed fabric.

You will also need: elastic thread

CUTTING:

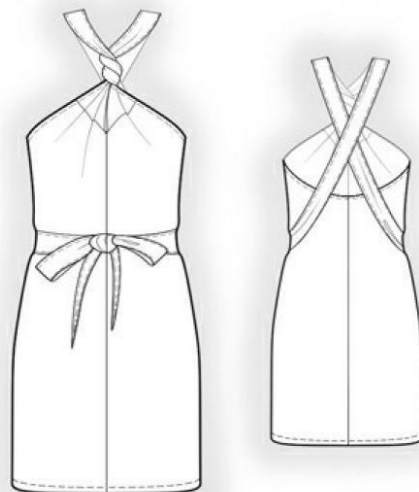
The word, "beam" used on some patterns means "straight of grain". Some pieces will be cut on the fold, this is noted on the pattern piece. Mark all notches and other design features such as darts, pleats etc. from the pattern onto your fabric.

Main fabric:

1. Upper part of dress – cut 2
2. Lower part of dress – cut 1 on fold

INSTRUCTIONS:

1. Serge upper parts of the dress around all edges BUT the lower one. Turn seam allowances inside and topstitch.
2. Sew center edge of dress. Serge seam and press towards left. Serge, turn inside and topstitch upper edge of dress.



3. Sew upper parts of dress to the main piece. Serge and press towards bottom.
4. Sew two parallel stitches with elastic thread along the upper edge from marking to marking, for a more snug fit.
5. Lower seam allowance of dress serge, fold inside onto wrong side and topstitch.

Congratulations, your dress is ready! :)