

If the pattern has a double line around it, the seam allowances are included.

Note: By default, seam allowances are NOT included (single line) and will need to be added when laying out and cutting details.

Seam Allowance: 1 cm on all seams; hem guidelines are printed on pattern.

Important! Please print all the paper patterns and lay them out at the width of fabric you plan to use (usually from 90 to 150 cm) to see how much fabric you will need.

Don't forget to take into account pieces to be duplicated or cut on a fold. When sewing the garment, pay attention to notches. They must match up with corresponding pieces.

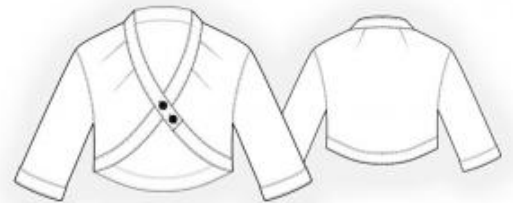
5911 Bolero Jacket with Two Buttons

Recommendations on fabric: jeans fabric.

You will also need: 2 buttons.

CUTTING:

The word, “beam” used on some patterns means “straight of grain”. Some pieces will be cut on the fold, this is noted on the pattern piece. Mark all notches and other design features such as darts, pleats etc. from the pattern onto your fabric.



Seam allowances: all seams 1 cm.

Main fabric:

1. Front part – 2 details
2. Back part – 1 detail
3. Buttonstand – 2 details
4. Front part facing – 4 details
5. Back part facing – 2 details
6. Sleeve – 2 details
7. Cuff – 2 details

INSTRUCTIONS:

1. Make and press darts on front and back pieces. Press dart bulk toward the shoulder edge, and on the back piece toward the center. Sew darts. Stitch darts 2.5 cm away from the neckline and 0.1 cm from the seam. Secure darts near the neckline edge.
2. Sew shoulder seams. Press seams toward the back and serge.
3. Sew sleeves into open armholes. Serge seams and press toward sleeves. Topstitch along the curved edge 0.5 cm from the seam. Sew sleeve seam and side seam in one step. Serge seam allowances and press toward the back.
4. Fold cuffs right sides together and sew short edges. Turn right side out, straighten, fold in half lengthwise, and press. Sew outer edge of cuff to lower edge of sleeve. Turn inner edge of cuff under by 1 cm and topstitch into outer seam. Topstitch along seam and cuff fold.
5. Sew side seams of front and back plackets. Press seams open. Fold plackets right sides together and stitch along the lower edge and front edge. Turn right side out, straighten, and press. Sew outer plackets to lower edges of front and back. Turn inner placket edge under by 1 cm and topstitch into outer placket seam. Topstitch along seam and placket edge.
6. Fold front stand plackets right sides together and stitch along neckline and both short edges. Turn right side out, straighten, and press. Sew upper plackets to neckline and front edge. Turn upper edge of lower placket under by 1 cm and topstitch into seam. Topstitch along placket contour.
7. Work buttonholes on right front, and sew buttons on left front.

Congratulations – your bolero are finished! :)