

If the pattern has a double line around it, the seam allowances are included.

**Note:** By default, seam allowances are NOT included (single line) and will need to be added when laying out and cutting details.

Seam Allowance: 1 cm on all seams; hem guidelines are printed on pattern.

**Important!** Please print all the paper patterns and lay them out at the width of fabric you plan to use (usually from 90 to 150 cm) to see how much fabric you will need.

Don't forget to take into account pieces to be duplicated or cut on a fold. When sewing the garment, pay attention to notches. They must match up with corresponding pieces.

## 5964 Chinese dress

Recommendations on fabric: silk fabrics approx. 1.7 m (size 32-42), approx. 2 m (size 44-54) with a fabric width of 150 cm.

You will also need: fusible interfacing, invisible zipper, decorative tape, 3 decorative hang loops, 3 buttons, hook and eyelet.

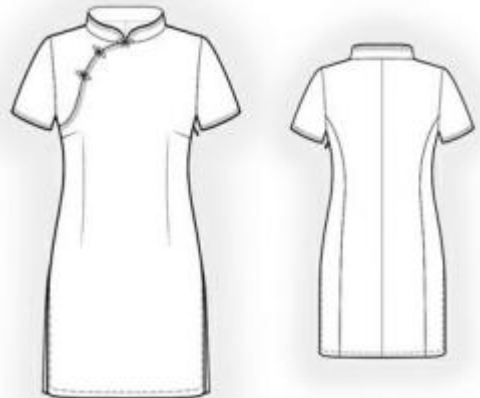
### CUTTING:

The word, "beam" used on some patterns means "straight of grain". Some pieces will be cut on the fold, this is noted on the pattern piece. Mark all notches and other design features such as darts, pleats etc. from the pattern onto your fabric.

### Main fabric:

1. Central back – 2 pieces
2. Side back – 2 pieces
3. Front – 1 piece
4. Upper front – 1 piece
5. Collar – 2 pieces
6. Sleeve – 2 pieces

Fusible interfacing: lower collar.



## INSTRUCTIONS:

1. Apply interfacing to lower collar.
2. Sew middle edge of back. Press seam to left and serge. Sew central and side backs, press seams toward the center and serge.
3. Sew bust darts on front and press them downwards. Sew waist darts on front and press them toward center.
4. Serge upper curved edge of front and lower curved edge of upper front. Advice: to avoid stretching the curved edge, apply fusible net to the edges. Put front and upper front together and sew curved edge from notch to side edge (seam allowance of upper front's lower edge is 0.5 cm wider). Press seam allowances downwards. Topstitch decorative tape along curved edge, turning back seam allowance of upper front.
5. Sew shoulder edges, press seam allowances to back and serge.
6. Serge seam allowances of front / back side edges. Sew the left side edge from top to zipper notch and from next notch to lower slit. Press apart seam allowances of side seam, press zipper slit edges and lower slit edges. Place zipper under the slit so that zipper blades cannot be seen and sew. Sew right side edge from top down to notch, press apart the seam, pressing slit edges.
7. Put collars right sides together and stitch outer edge, starting and ending the stitch exactly at marked line of collar connection. Clip on curves, turn collar out, press. Sew the outer collar into neckline, turn under the edge of inner collar and topstitch into outer collar connecting seam. Topstitch decorative tape along upper edge.
8. Sew sleeve edges, press and serge seam allowances. Sew sleeves into armholes matching notches. Press and serge seam allowances. Turn the hem of sleeve twice inside and topstitch. Topstitch decorative tape along the lower edge.
9. Topstitch slit allowances on dress. Turn the hem of dress twice inside and topstitch.
10. Sew eyelet on upper front between neckline and notch, sew hook on front. Sew decorative loops and buttons on the front and on upper front.

Congratulations, your dress is ready! :)