

If the pattern has a double line around it, the seam allowances are included.

Note: By default, seam allowances are NOT included (single line) and will need to be added when laying out and cutting details.

Seam Allowance: 1 cm on all seams; hem guidelines are printed on pattern.

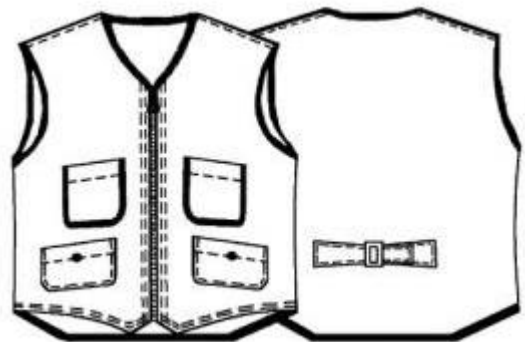
Important! Please print all the paper patterns and lay them out at the width of fabric you plan to use (usually from 90 to 150 cm) to see how much fabric you will need.

Don't forget to take into account pieces to be duplicated or cut on a fold. When sewing the garment, pay attention to notches. They must match up with corresponding pieces.

6008 Men's vest with pockets

Recommendations on fabric: Lightweight coat fabric approx. 0.8 m (size XXS-L), approx. 1.5 m (from size XL) with a fabric width of 150 cm.

You will also need: Black cotton approx. 20 cm, black bias tape approx. 4 m, black dividable zip approx. 40 cm, 2 studs 1.6 cm in diameter, belt buckle 3.5 cm.



CUTTING:

The word, "beam" used on some patterns means "straight of grain". Some pieces will be cut on the fold, this is noted on the pattern piece. Mark all notches and other design features such as darts, pleats etc. from the pattern onto your fabric.

Main fabric:

1. Back part – 1 folded piece
2. Front part – 2 pieces
3. Upper pocket – 2 pieces
4. Lower pocket – 2 pieces

Black cotton:

1. Half-belt – 4 pieces

NB: if you have check fabric, take into account when pinning patterns on the fabric how

checks will coincide along seams.

INSTRUCTIONS:

1. Lay the piping on the garment right sides together, coincide along edges, and stitch at the distance of $\frac{1}{4}$ of piping width. Round garment's edge with the piping, fold the rest of piping ($\frac{1}{4}$ of piping width) and topstitch along the bending coinciding with the seam stitches before.
2. Neaten pockets' upper edges, press allowances into wrong side and stitch at 2 cm from edges.
3. Stitch pockets on right side along piping joining seam.
4. Overstitch half-belts, turn them right side out and press. Pin side folded half-belts on back part, stitch, fold them towards middle line and topstitch along edges.
5. Stitch shoulder seams, press allowances apart and topstitch along both sides of the seam (right side). Neaten closure/front hem allowances and press allowances into wrong side. Sew zipper braid in and make double stitch on right side of front edgings and front hems. Stitch side seams in the same way as shoulders. Set studs. Stitch the clasp on the right half-belt and right back part.

Congratulations, your vest is ready! :)