

If the pattern has a double line around it, the seam allowances are included.

**Note:** By default, seam allowances are NOT included (single line) and will need to be added when laying out and cutting details.

Seam Allowance: 1 cm on all seams; hem guidelines are printed on pattern.

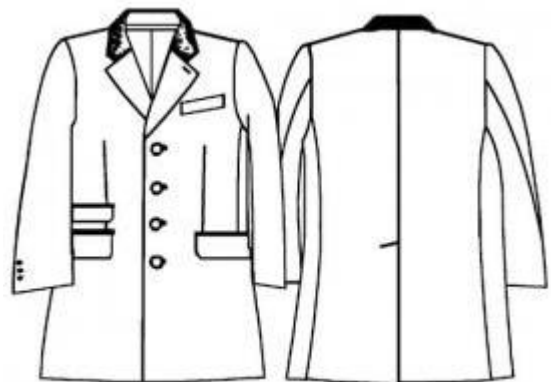
**Important!** Please print all the paper patterns and lay them out at the width of fabric you plan to use (usually from 90 to 150 cm) to see how much fabric you will need.

Don't forget to take into account pieces to be duplicated or cut on a fold. When sewing the garment, pay attention to notches. They must match up with corresponding pieces.

## 6010 Classic single-breasted short coat for men

Recommendations on fabric: wool/semi wool fabrics suitable for coats.

You will also need: velvet/cotton velvet for collar (20 cm); felt of 20 cm length and 90 cm width; lining; fusing; warmer of 80 cm length and 80 cm width; 4 buttons of 25 mm diameter; 8 buttons of 12 mm; shoulder pads.



### CUTTING:

The word, "beam" used on some patterns means "straight of grain". Some pieces will be cut on the fold, this is noted on the pattern piece. Mark all notches and other design features such as darts, pleats etc. from the pattern onto your fabric.

### Main fabric:

1. Back part – 2 pieces
2. Front part – 2 pieces
3. Upper sleeve – 2 pieces
4. Lower sleeve – 2 pieces
5. Flap – 2 pieces
6. Right small flap – 1 piece
7. Left small off-set welt – 1 piece
8. Front band – 2 pieces
9. Right small facing (rectangle of 12x4 cm) – 2 pieces
10. Facing (rectangle of 17.5x4 cm) – 4 pieces

11. Left small sacking – 1 piece
12. Right small sacking (rectangle of 12x13 cm) – 1 piece
13. Sacking (rectangle of 17.5x19 cm) – 2 pieces

Velvet:

14. Outer collar – 1 piece
15. Stand-up collar – 1 piece

Felt:

16. Inner collar – 1 piece

Lining:

1. Back part+2 cm along middle line (for free-fit pleat)
2. Front part excluding front bands
3. Both sleeves without slit facing
4. Flaps, sackings/small sackings without changes

Lining hems are 2 cm shorter than fabric one.

Fusing:

front part, marked segment of front bands and hem/sleeve hems allowances, half height of off-set welt.

INSTRUCTIONS:

1. Apply the fusing to wrong side of front part, marked segment of front bands and hem/sleeve hems allowances, half height of off-set welt.
2. Left front part: Bend off-set welt along the center wrong side out, overstretch short edges, turn it right side out and press. Pin downfolded off-set welt on garment's right side according to marks. Lay lining sacking on off-set welt; pin upfolded fabric sacking on and topstitch along both sides of marking at 5 mm distance. Cut the fabric between stitches chevron wise to stitches' ends; turn sackings into wrong side. Topstitch welt's free edge on the sacking with zig zags. Fold both sackings, adjust them and stitch together along the contour. On right side: stitch welt's ends on the garment.
3. Stitch front darts and press them apart.
4. Overstretch flaps with the lining, turn them right side out and press.
5. Both front parts: Cut slit "frame" pockets with two facings into back parts: Press facings

along the center wrong side out. Pin controversially folded facings on garment's right side according to marks. Lay lining sacking on lower facings. Lay fabric sacking on upper facing inserting flap folded upward between upper facing and fabric sacking and topstitch along both sides of marking at 5 mm distance. Cut the fabric between stitches chevron wise to stitches ends; turn sackings into wrong side and make 1-cm facings. Fold the sacking double and topstitch its upper edge on upper facing's allowance. Stitch sacking's side edges together. On wrong side: topstitch facing's ends on fabric triangles.

6. Do the same for small pocket into right front part.

7. Stitch back part along middle seam up to the vent.

8. Stitch side/shoulder seams.

9. Press allowances apart.

10. Fold left back part vent's allowance into right side and stitch along hem line. Then turn right side out. Fold right back part's hem into right side and stitch along vent allowance's edge, then turn right side out.

11. Fold the vent leftward and fix vent's top with diagonal stitch.

12. Stitch stand-up to outer collar and press allowance apart.

13. Stretch the felt with hot iron (with wet gauze) to give the felt the form of outer collar joint with stand-up.

14. Lay inner collar's upper edge with its wrong side on right side of outer collar's upper edge and stitch with narrow zig zags. Lay outer collar on inner one right side together, stitch them along ends, turn right side out and press the detail.

15. Stitch front bands to outer collar and press allowances upwards.

16. Lay front bands joint with outer collar on the garment right sides together, adjust edges and overstitch front edgings and the collar. Then turn right side out and press.

17. Make 1 cm stitch along closure and lapels up to the collar.

18. Press sleeve's upper part together and stitch upper sleeve to elbow part down to slit mark. Press allowances apart and turn the sleeve right side out. Fold slit allowances and hem allowances into right side, stitch the corner diagonally, cut extra fabric at 1 cm from

the seam and press allowances apart. Press allowances into wrong side, sew with cross stitches and overlap the slit.

19. Ease sleeve cap slightly (narrow close stitches) between marks and pull the cord till sleeve cap coincides to armhole. Moist the fabric and iron pleats. Stitch sleeve seam and press allowances apart. Pin sleeves to the garment coinciding marks. Stitch sleeves to garment at sleeve side.

20. Cut the warmer into equal parts and sew it to sleeve caps' wrong sides.

21. Press the hem into wrong side and sew with blind stitches.

22. Sew shoulder pads.

23. Stitch lining back part along middle seam.

24. Make free-fit pleat and fix it under neckline and few cm above garment's hem. Stitch lining details in the same way as fabric's, leave a segment of 20 cm length into an elbow seam. Lay the lining into fabric garment right sides together, coinciding middle back line and shoulder seams. Overstitch the garment with lining along front bands and neckline. Make a lapping pleat into hem and stitch the lining to hem edge, side vent facing and along back vent facing's edge (before you do it, slash horizontally lining allowances at back vent's hem). Turn the garment right side out through sleeve segment, then stitch segment's edges together.

25. Make buttonholes into left front edging, sew buttons.

26. Make buttonholes into sleeves (do not cut the fabric) and fix sleeve slits with buttons.

Congratulations, your coat is ready! :)