

If the pattern has a double line around it, the seam allowances are included.

Note: By default, seam allowances are NOT included (single line) and will need to be added when laying out and cutting details.

Seam Allowance: 1 cm on all seams; hem guidelines are printed on pattern.

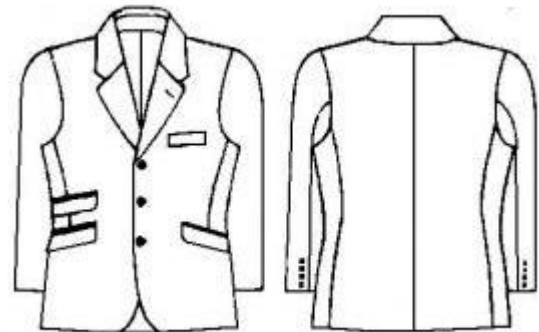
Important! Please print all the paper patterns and lay them out at the width of fabric you plan to use (usually from 90 to 150 cm) to see how much fabric you will need.

Don't forget to take into account pieces to be duplicated or cut on a fold. When sewing the garment, pay attention to notches. They must match up with corresponding pieces.

6018 Men's four-pocket blazer

Recommendations on fabric: wool fabrics suitable for blazers approx. 1,7 m (size XXS-M), approx. 2,3 m (size L-XXL) with a fabric width of 150 cm. Lining approx. 1,5 m (size XXS-M), approx. 2 m (size L-XXL) with a fabric width of 150 cm.

You will also need: fusible interfacing, collar interlining, sleeve head interfacing, 3 buttons of 20 mm diameter, 9 buttons of 15 mm diameter, shoulder pads.



CUTTING:

The word, "beam" used on some patterns means "straight of grain". Some pieces will be cut on the fold, this is noted on the pattern piece. Mark all notches and other design features such as darts, pleats etc. from the pattern onto your fabric.

Main fabric:

1. Back part – 2 pieces
2. Front part – 2 pieces
3. Side part – 2 pieces
4. Upper sleeve – 2 pieces
5. Elbow part – 2 pieces
6. Flap – 2 pieces
7. Right small flap – 1 piece

8. Left small flap – 1 piece
9. Sacking – 2 pieces
10. Right small sacking – 1 piece
11. Outer collar – 1 folded piece
12. Stand-up collar – 1 folded piece
13. Front band – 2 pieces
14. Left small sacking – 1 piece
15. Facing (18x3 cm rectangle) – 4 pieces
16. Right small facing (13x3 cm rectangle) – 2 pieces
17. Left small facing (13x3 cm rectangle) – 2 pieces

Collar interlining:

1. Inner collar – 1 folded piece

Lining:

1. Back part: use back part pattern+2 cm along middle ling for free-fit pleat
2. Front part (without front bands)
3. Both sleeves (without slit allowances)
4. Side part, flap and small flaps, sacking and small sackings – without changes
5. Hems: 2 cm shorter than fabric's ones.

NB: if you have check fabric, take into account when pinning patterns on the fabric how checks will coincide along seams.

Fusible interfacing:

1. Outer collar – 1 folded piece
2. Stand-up collar – 1 folded piece
3. Front part – 2 pieces
4. Front band – 2 pieces
5. Flap – 2 pieces
6. Facing (18x3 cm rectangle) – 4 pieces
7. Right small flap – 1 piece
8. Left small flap – 1 piece

INSTRUCTIONS:

NB! Leave seam allowances open when stitching.

1. Apply fusible interfacing to the wrong side of the outer collar, stand-up collar, front parts, front bands, flaps, facings, hems, small flaps, and the left vent allowance on the back.

2. Cut the pocket opening on the front part. Stitch the darts, cut them along the fold, and press them open. Baste the pocket entrance edges together.
3. Stitch the fabric left small flap to the lining one, right sides together along the outer edges. Turn right side out and press. Repeat this process for the right small flap and the larger flaps.
4. Left Front Part:
 - Create the slit "frame" for the small pocket with two facings on the left front part. Press the facings along the center with the wrong sides out. Pin the folded facings onto the right side of the garment according to the markings. Place the lining sacking on the lower facing, and the fabric sacking on the upper facing, inserting the flap (folded upward) between the upper facing and the fabric sacking. Topstitch along both sides of the marked line at a 5 mm distance.
 - Cut the fabric between the stitches diagonally at the ends. Turn the sackings to the wrong side to form 1 cm facings. Fold the sacking in half and topstitch its upper edge onto the upper facing's allowance. Stitch the side edges of the sacking together.
 - On the wrong side, topstitch the ends of the facing onto the fabric triangles.
5. Stitch the front princess seams.
6. Create the slit "frame" for the small pocket with two facings and insert the flap, in the same way as the left small pocket.
7. Make the slit "frame" pockets with two facings on the front parts in the same way as the small pockets.
8. Quilt the welt on the wrong side according to the markings.
9. Stitch the center back seam up to the vent mark and stitch the top edges of the vent allowances.
10. Align the shoulder edges together at the marked segment, then stitch the shoulder seams.
11. Stitch the side seams.
12. Cut the marked segment from the right side of the outer and inner collar, leaving a 1 cm allowance.
13. Stitch the stand-up collar to the outer collar, matching control marks. Press allowances

open.

14. Press the inner collar with a hot iron to shape it to fit the outer collar joined with the stand-up collar.

15. Stitch the outer collar to the front bands.

16. Place the outer collar with the front bands onto the garment, right sides together, and stitch along the lapels and front edges. Turn right side out and press.

17. Press the upper sleeve part together and stitch the upper sleeve to the elbow section down to the slit mark. Press the allowances open and turn the sleeve right side out. Fold the slit and hem allowances to the right side, stitch the corner diagonally, trim excess fabric to 1 cm from the seam, and press allowances open. Press allowances to the wrong side, sew with cross stitches, and overlap the slit.

18. Ease the sleeve cap slightly with narrow, close stitches between the marks, and pull the cord until the sleeve cap matches the armhole. Moisten the fabric and iron pleats. Pin the sleeves to the garment, aligning marks, and stitch the sleeves to the garment at the sleeve side.

19. Cut the interlining into equal pieces and sew to the wrong side of the sleeve caps.

20. Fold the vent left allowance to the right side and stitch along the back hem line. Fold the right back hem to the right side and stitch along the edge of the vent allowances. Turn right side out and press.

21. Form the vent and press it.

22. Press the jacket hem and sleeve hems to the wrong side, and sew with blind stitches.

23. Sew in the shoulder pads.

24. Create a free-fit pleat and secure it under the neckline and a few centimeters above the hem. Stitch the lining pieces as for the fabric, leaving a 20 cm opening in an elbow seam. Lay the lining into the garment, right sides together, aligning the center back line and shoulder seams. Stitch the garment to the lining along the front bands and neckline. Press the outer collar's open edges to the wrong side. Place the outer collar over the inner collar, wrong sides together. Sew the inner collar to the outer collar and neckline by hand with zigzag stitches. Create a pleat at the hem and stitch the lining to the hem edge, side vent facing, and along the back vent facing's edge (first, horizontally clip the lining allowances

at the back vent's hem). Turn the garment right side out through the sleeve opening, then stitch the edges of the opening together.

25. Make buttonholes on the left front edge and the left edge of the collar; sew on the buttons.

26. Make buttonholes on the sleeve (without cutting through) and secure the sleeve slit with buttons.

Congratulations, your blazer is ready! :)