

If the pattern has a double line around it, the seam allowances are included.

Note: By default, seam allowances are NOT included (single line) and will need to be added when laying out and cutting details.

Seam Allowance: 1 cm on all seams; hem guidelines are printed on pattern.

Important! Please print all the paper patterns and lay them out at the width of fabric you plan to use (usually from 90 to 150 cm) to see how much fabric you will need.

Don't forget to take into account pieces to be duplicated or cut on a fold. When sewing the garment, pay attention to notches. They must match up with corresponding pieces.

6038 Men's trousers with removable pant legs

Recommendations on fabric: cotton or bologna fabric or poplin approx. 2.1 m (size XS-M), approx. 2.5 m (size L-XXL) with a fabric width of 150.

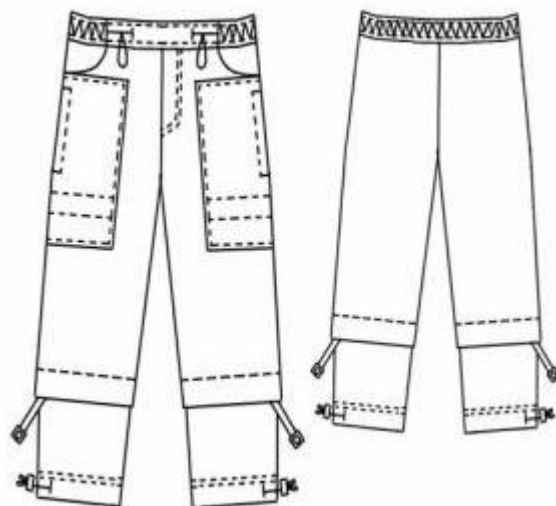
You will also need: lining for pockets approx. 0.3 m, fusible interfacing, 3 cm wide elastic, 2 separable zips approx. 70 cm, 4 eyelets, cord, 2 cord stoppers.

CUTTING:

The word, "beam" used on some patterns means "straight of grain". Some pieces will be cut on the fold, this is noted on the pattern piece. Mark all notches and other design features such as darts, pleats etc. from the pattern onto your fabric.

Main fabric:

1. Waistband – 1 piece
2. Pocket – 2 pieces
3. Upper front part – 2 pieces
4. Side front part – 2 pieces
5. Lower front part - 2 pieces
6. Upper back part – 2 pieces
7. Lower back part – 2 pieces



Lining:

1. Upper pocket sacking – 2 pieces

Fusible interfacing: button catch, waistband.

INSTRUCTIONS:

1. Apply the fusing to the wrong side of waistband and button catch.
2. Press pocket allowances to wrong side, then topstitch pocket entrance and decorative stitches along the pocket lower edge. Lay pockets on the upper front parts and topstitch along the perimeter (excepting pocket entrance). Stitch the sacking and the garment along the pocket entrance, right sides together. Turn them right side over, then press and stitch. Lay the front part on the side part, make sackings equal, then stitch edges. Sew sackings and waist edge of trousers.
3. Sew the front middle seam, press to left, then make a decorative stitch.
4. Sew the side and inside leg seams. Sew back the middle seam.
5. Sew trousers lower parts “in a ring”.
6. Removable legs: Sew one part of the zip to the top edge of the lower part of the trousers. Another part of the of the zip to the bottom edge of the upper part of the trousers. Fold and sew the pleat to the upper part of the trousers as marked. Sew the second trouser leg in the same way.
7. Sew the waistband to trousers upper edge. Press the waistband along the center, then turn the waistband’s inner edge and topstitch it along the joining seam, leaving a slit unstitched. Pull the elastic braid into the waistband, fix it according to marks. Sew the unstitched place.
8. Make eyelets on the lower parts of the garment. Press the hem inside, then topstitch. Pull the cord into eyelets.

Congratulations, your trousers are ready! :)