

If the pattern has a double line around it, the seam allowances are included.

Note: By default, seam allowances are NOT included (single line) and will need to be added when laying out and cutting details.

Seam Allowance: 1 cm on all seams; hem guidelines are printed on pattern.

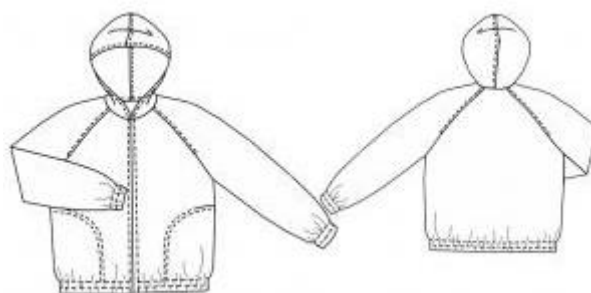
Important! Please print all the paper patterns and lay them out at the width of fabric you plan to use (usually from 90 to 150 cm) to see how much fabric you will need.

Don't forget to take into account pieces to be duplicated or cut on a fold. When sewing the garment, pay attention to notches. They must match up with corresponding pieces.

6044 Windbreaker with raglan sleeves for men

Recommendations on fabric: moreen/fabrics suitable for raincoats of 150 cm width

You will also need: elastic braid; separable zipper



CUTTING:

The word, "beam" used on some patterns means "straight of grain". Some pieces will be cut on the fold, this is noted on the pattern piece. Mark all notches and other design features such as darts, pleats etc. from the pattern onto your fabric.

Main fabric:

1. Pocket – 4 pieces
2. Back part – 1 folded piece
3. Front part – 2 pieces
4. Hood – 2 pieces
5. Back sleeve – 2 pieces
6. Front sleeve – 2 pieces

INSTRUCTIONS:

1. Sew side seams leaving pocket entrance unstitched. Lay both sackings on garment wrong side on pocket entrance right sides together and pin them along pocket entrance. Sew sackings strictly along marked side seam lines, below pocket entrance, closely to the seam. Press sackings forward, tack to front part and topstitch along marking.

2. Sew sleeve upper seams. Press allowances forward and topstitch them.
3. Sew sleeve lower seams; do not stitch edges below bending line (to pull elastic braid in). Turn one-piece facing of sleeve lower edges to wrong side, fold them under and topstitch along coulisse marking. Pull elastic braids equal to wrist girth into coulisses. Topstitch braid ends.
4. Sew sleeves into open armholes; press allowances and topstitch.
5. Sew hood details. Press seam allowance to hood left part and topstitch. Turn hood allowance along face side to wrong side fold it under and topstitch. Sew the hood into neckline, leaving edge allowances behind ends of seam joining the hood. Press allowances of seam joining the hood downwards. Topstitch the garment along seam joining the hood.
6. Turn one-piece facing of garment hem to wrong side, fold it under and topstitch along coulisse marking. Pull elastic braids into coulisses, topstitch braid ends.
7. Press edging allowances to wrong side. Sew separable zipper under edgings with its teeth hidden, when sewing the zipper, fold zipper braid's upper ends under.

Congratulations, your windbreaker is ready! :)