

If the pattern has a double line around it, the seam allowances are included.

Note: By default, seam allowances are NOT included (single line) and will need to be added when laying out and cutting details.

Seam Allowance: 1 cm on all seams; hem guidelines are printed on pattern.

Important! Please print all the paper patterns and lay them out at the width of fabric you plan to use (usually from 90 to 150 cm) to see how much fabric you will need.

Don't forget to take into account pieces to be duplicated or cut on a fold. When sewing the garment, pay attention to notches. They must match up with corresponding pieces.

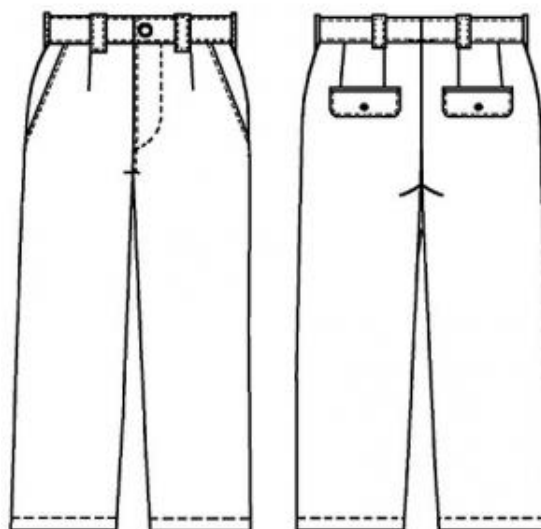
6051 Men's Suit Trousers with Flap Back Pockets

Recommendations on fabric: natural or mixed fabric of 150 cm width.

You will also need: lining; fusible interfacing; zipper, 1 button.

CUTTING:

The word, "beam" used on some patterns means "straight of grain". Some pieces will be cut on the fold, this is noted on the pattern piece. Mark all notches and other design features such as darts, pleats etc. from the pattern onto your fabric.



Seam allowances: 1 cm for all seams.

Main fabric:

1. Button catch – 1 folded piece
2. Front side part – 2 pieces
3. Waistband left part – 1 piece
4. Waistband right part – 1 piece
5. Back pocket flap – 4 pieces
6. Back valance – 2 pieces
7. Back pocket facing - 2 pieces

8. Belt loop – 1 piece
9. Front part – 2 pieces
10. Back part – 2 pieces

Lining:

1. Front sacking – 4 pieces
7. Back pocket lining – 2 pieces
13. Front part lining – 2 pieces

Fusing: waistband details, button catch, flaps, facings.

INSTRUCTIONS:

1. Apply fusible interfacing to the wrong side of the waistband, button catch, flaps, and facing.
2. Sew back darts and press them toward the center.
3. Make welt pockets on the back pieces: press a 4-cm stripe of interfacing on the wrong side of the back piece along the pocket marking. Fold flap pieces in pairs, right sides together, and stitch along three edges. Turn them right side out, finish edges, and press. Topstitch the facing onto lining. Press pocket facings in half lengthwise, right side out. Pin the facing along the pocket opening on the right side, with its fold opposite the marking, placing the flap under the upper facing. Stitch 1 cm from the line. Cut the back piece between stitched lines, cutting diagonally into the stitch ends. Be careful not to cut into the facing and pocket bag. Press seam allowances toward the garment. Turn facings to the wrong side to create a neat frame, then baste. From the right side, stitch exactly along the seam joining the facing. Turn small triangles at the slit ends to the wrong side, then topstitch exactly along the facing from one stitch end to the other. From the wrong side, sew the free end of the pocket bag to the seam allowances of the facing joining seam, then press the pocket bag downward, align them, and stitch.
4. Place the wrong side of the side piece on the right side of the pocket bag, turn the inner edge under, and stitch along the edge. Sew the side and pocket bag along open edges. Stitch the pocket bag to the garment, right sides together, along the pocket opening. Turn right side out, press, and topstitch. Align pocket bags and stitch their edges. Sew the pocket bags and garment to the waistband edge.
5. Sew the front crotch seam 3–4 cm down from the closure. Press the one-piece facing of the left trouser front to the wrong side along the center. Cut the facing from the

right trouser front, leaving a 1 cm allowance. Press this allowance to the wrong side and baste one side of the zipper, with its teeth close to the fold. Fold the button catch in half lengthwise, wrong sides together, then finish the long edge and the rounded edge. Baste the finished edge, placing it under the right slit side with the zipper. Topstitch the right side along the edge, attaching the zipper and button catch. Match center lines. Pin the free zipper tape to the left facing, then stitch without catching the front piece. Then stitch the left front along the marking, securing both the facing and the zipper.

6. Sew inseams. Finish allowances.
7. Fold belt loops in half lengthwise, tuck raw edges inside, and topstitch. Sew belt loops to the upper edge of the garment: on the front above the pleats, on the back beside the darts, near the side seams.
8. Sew the waistband pieces to the upper edge of the garment, attaching the closure allowance to the button catch. Fold the waistband along the center, then stitch the short front edges. Sew the slit in the front crotch seam, then continue the same seam up the back crotch seam to the waist. Turn the inner waistband edges under and topstitch along the joining seams. Turn the belt loops upward and sew them to the waistband upper edge.
9. Turn hem allowances under and sew with blind stitches above the seams.
10. Make a buttonhole on the right end of the waistband, and sew the button on the left end.

Congratulations, your trousers is ready! :)