

If the pattern has a double line around it, the seam allowances are included.

Note: By default, seam allowances are NOT included (single line) and will need to be added when laying out and cutting details.

Seam Allowance: 1 cm on all seams; hem guidelines are printed on pattern.

Important! Please print all the paper patterns and lay them out at the width of fabric you plan to use (usually from 90 to 150 cm) to see how much fabric you will need.

Don't forget to take into account pieces to be duplicated or cut on a fold. When sewing the garment, pay attention to notches. They must match up with corresponding pieces.

6053 Raincoat with broad welt side pockets for men

Recommendations on fabric: fabric of 150 cm width suitable for raincoats

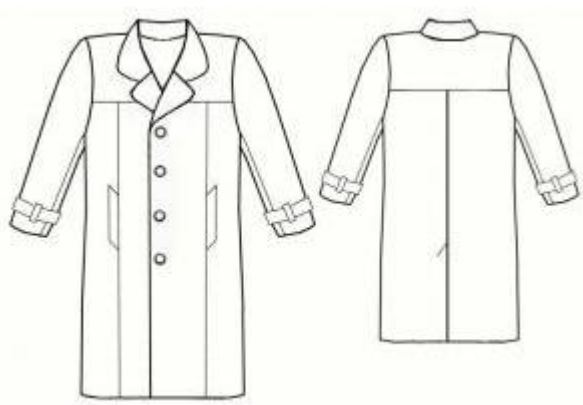
You will also need: lining; fusible interfacing; shoulder pads; 5 buttons

CUTTING:

The word, "beam" used on some patterns means "straight of grain". Some pieces will be cut on the fold, this is noted on the pattern piece. Mark all notches and other design features such as darts, pleats etc. from the pattern onto your fabric.

Main fabric:

1. Off-set welt – 2 pieces
2. Back yoke – 1 folded piece
3. Lower back part – 2 pieces
4. Front yoke – 2 pieces
5. Side front part – 2 pieces
6. Center front part - 2 pieces
7. Front band – 2 pieces
8. Collar – 2 folded pieces
9. Stand-up collar – 2 folded pieces
10. Sleeve back belt – 2 pieces
12. Sleeve front belt – 2 pieces



13. Upper sleeve – 2 pieces
14. Lower sleeve – 2 pieces
15. Belt loop – 1 piece

Lining:

1. Sacking – 4 pieces
2. Upper sleeve – 2 pieces
3. Lower sleeve – 2 pieces
4. Lower back part – 2 pieces
5. Front part – 2 pieces

Interfacing: center front part, back vent allowance, welt's half width, front yoke, front bands, sleeve belts, collar, stand-up collar.

INSTRUCTIONS:

1. Apply the fusing to wrong side of center front part, back vent allowance, welt's half width, front yoke, front bands, sleeve belts, collar, stand-up collar.
2. Sew off-set welt along short edges, turn it right side out and press. Topstitch the detail at 1 cm from edges. Lay the welt on center front part's right side according to marks and coincide welt's open edges and center front relief's edge. Lay sacking's upper part on the welt, tack them together. Lay sacking's lower part on side front part's right side. Stitch the welt and sackings. Stitch front relieves and topstitch them. Fold sackings inside, adjust them and stitch together. Topstitch welt's short edges on front part along decorative topstitching.
3. Stitch lower front parts to yokes. Press seams upwards and topstitch them.
4. Stitch back middle seam to the vent, press allowances leftward and topstitch. Fold vent's left allowance into right side, stitch it along hem line, turn into wrong side and press it. Topstitch vent's left edge. Fold right back part's hem into right side, stitch along vent's allowance, fold into wrong side and press. Fold the vent into left side and make diagonal stitch at vent's top to fix it.
5. Stitch back yoke, press seam allowances toward the yoke and topstitch. Stitch side/shoulder seams.
6. Stitch stand-up collar s to inner/outer collars, press seams apart and make decorative topstitching along both sides of seams. Stitch inner collar joint with stand-up into garment's neck.

7. Fold sleeve belts along the center wrong sides out and overstitch along one long/one short edges. Turn the detail right side out, and press.
8. Stitch sleeve's upper seams. Press seam allowances frontward and topstitch them. Stitch sleeve's lower seam inserting sleeve bents according to marks. Fold the belt loop along the center wrong side out, stitch long edges, turn the detail right side out, press and topstitch. Cut the detail into 8 pieces, fold belt loops' open edges under and stitch to sleeves according to marks. Stitch sleeves into armholes coinciding marks. Sew shoulder pads. Press sleeve hems under and sew them with blind stitches.
9. Stitch front bands to front parts' lining and stitch lining details together. Stitch outer collar into lining neckline. Lay the garment on the lining right sides together and stitch them together with one stitch: 3 cm of front bands' hems along front hem line, front edgings, and the collar. Turn the garment right side out, press and make decorative topstitching along collar edges and front edgings.
10. Sew inner/outer collars' allowances together from inside.
11. Press garment's hem into wrong side and stitch along the edge. Cut the lining strictly above the vent (diagonally to vent's top). Fold slit allowances under and sew them to vent's allowances. Fold lining sleeve's hem under and sew it to fabric sleeve's hem.
12. Neaten buttonholes into sleeve belts and left front edging as well as upper buttonholes into right lapel. Sew buttons.

Congratulations, your raincoat is ready! :)