

If the pattern has a double line around it, the seam allowances are included.

**Note:** By default, seam allowances are NOT included (single line) and will need to be added when laying out and cutting details.

Seam Allowance: 1 cm on all seams; hem guidelines are printed on pattern.

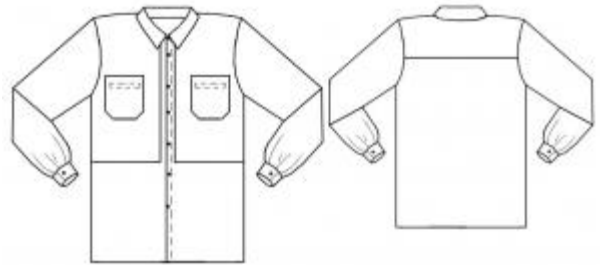
**Important!** Please print all the paper patterns and lay them out at the width of fabric you plan to use (usually from 90 to 150 cm) to see how much fabric you will need.

Don't forget to take into account pieces to be duplicated or cut on a fold. When sewing the garment, pay attention to notches. They must match up with corresponding pieces.

## 6055 Men's shirt with loose yoke

Recommendations on fabric: poplin of 150 cm width.

You will also need: fusing, 11 buttons.



### CUTTING:

The word, "beam" used on some patterns means "straight of grain". Some pieces will be cut on the fold, this is noted on the pattern piece. Mark all notches and other design features such as darts, pleats etc. from the pattern onto your fabric.

Seam allowance: on hem – 2.0 cm, other seam allowances – 1 cm.

### Main fabric:

1. Collar – 2 folded pieces
2. Stand-up collar – 2 folded pieces
3. Back yoke – 1 folded piece
4. Back part – 1 folded piece
5. Bust pocket – 2 pieces
6. Pocket facing – 4 pieces
7. Front part – 2 pieces
8. Fly yoke – 2 pieces
9. Sleeve – 2 pieces
10. Sleeve slit facing – 2 pieces
11. Cuff – 2 pieces

Fusing: pocket facing, cuffs, stand-up collar, collar.

#### INSTRUCTIONS:

1. Apply the fusing to wrong side of collar lower detail and stand-up lower detail as well as cuffs and pocket facing.
2. Process slit pocket “in frame” into fly yokes. Apply fusing stripe of 4 cm width to wrong side of place of cutting. Fold facings along the center right side out. Sew facings along marked lines to front parts, wrong sides together and with bindings out. Cut front part between stitches. Cut it diagonally to stitch ends (do not cut through facing). Make neat frame of facings. Turn small triangles at slit ends to wrong side and topstitch on facings strictly between upper stitch ends and lower stitch ends. Topstitch facings along joining seam. Neaten edges of bust pocket lay it fly yoke wrong side and topstitch.
3. Sew back yoke to back part, press the seams towards the yoke and topstitch.
4. Press lower/middle edges of fly yoke to wrong side, fold under and topstitch. Tack fly yokes to front parts along shoulder edges and armholes.
5. Sew side/shoulder seams, press allowances backwards and topstitch.
6. Press one-piece front band of front closure to wrong side, turn inner edge under and topstitch.
7. Stitch both collar details right sides together along outer contour. Turn right side out, press and topstitch. Lay one stand-up on another on right sides together, insert the collar between them (according to marks) and stitch; continue stitching on closure projection. Turn the collar right side out, press open edges of stand-ups in, insert neckline edge between them and stitch along the edge.
8. Make sleeve pleats. Cut sleeves according to marks, make diagonal notches neat slit end and sew the nearest to sleeve edge slit edge by hand. Lay sleeve slit facing right side on sleeve wrong side, stitch and turn stitch allowance out. Fold slit edges over with facing; fold facing open edges and topstitch on the garment. Sew sleeve seam and sew sleeves into armholes.
9. Sew cuff details right sides together along short edges, turn right side out and press. Sew cuffs to sleeve hems, turn inner edges under and topstitch along joining seam. Topstitch cuffs. Make buttonholes into cuffs and sew buttons.
10. Press garment hem to wrong side, fold it under and topstitch.

11. Make buttonholes into left front part and sew buttons to right one.

Congratulations, your shirt is ready! :)