

If the pattern has a double line around it, the seam allowances are included.

Note: By default, seam allowances are NOT included (single line) and will need to be added when laying out and cutting details.

Seam Allowance: 1 cm on all seams; hem guidelines are printed on pattern.

Important! Please print all the paper patterns and lay them out at the width of fabric you plan to use (usually from 90 to 150 cm) to see how much fabric you will need.

Don't forget to take into account pieces to be duplicated or cut on a fold. When sewing the garment, pay attention to notches. They must match up with corresponding pieces.

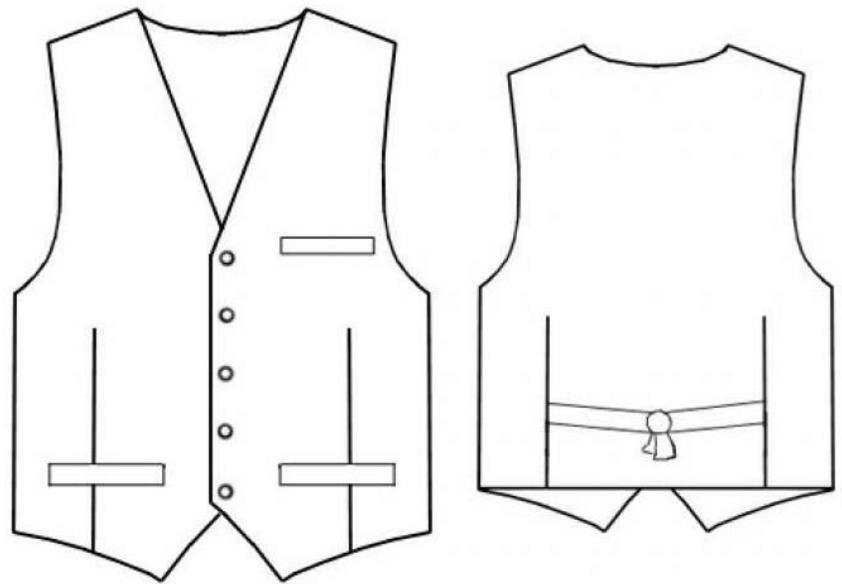
6063 Waistcoat for man

Recommendations on fabric:
semi-wool of 150 cm width

You will also need:
lining; fusing; 5 buttons

CUTTING:

The word, "beam" used on some patterns means "straight of grain". Some pieces will be cut on the fold, this is noted on the pattern piece. Mark all notches and other design features such as darts, pleats etc. from the pattern onto your fabric.



Main fabric:

1. Front band – 2 pieces
2. Lower pocket facing – 4 pieces
3. Upper pocket facing – 2 pieces
4. Front part – 2 pieces

Lining:

1. Lower sacking – 4 pieces
2. Upper sacking – 2 pieces

3. Back part – 2 folded pieces
4. Front part – 2 pieces
5. Tie – 2 pieces

Fusing: front band, facings, front part.

INSTRUCTIONS:

1. Apply the fusing to wrong side of front band, facings, front part.
2. Stitch front/back darts.
3. Cut front slit pockets “in frames”. Apply the stripe of fusing of 4 cm width to wrong side of slits. Press facings along the center right side out. Lay pocket facings’ edges on frame middle part and stitch them along marked lines. Cut the front part between stitches, cut the fabric diagonally at stitch ends. Do not cut facings! Fold facings into wrong side, make neat frame and press it. Turn small triangles at slit ends into wrong side and topstitch accurately between upper stitch ends and lower stitch ends. Cut sackings, coincide them and stitch them together.
4. Stitch fabric front parts’ side seams, stitch side seams of one of lining back details.
5. Stitch lining front parts to front bands. Stitch side seams of lining front part and another lining back part leaving unstitched segment in one of seams.
6. Lay the lining on the garment right sides together and stitch lower edges, edgings, neckline edges and armhole edges; stop stitching at 1 cm before armhole edges. Cut seams’ allowances close to the stitch, cut allowance at corners diagonally; make several notches into roundings. Turn the waistcoat right side out through shoulder seams, press it. Pull shoulder side into right side through unstitched segment of lining and stitch shoulder edges.
7. Fold allowances of unstitches segment of side seam into wrong side, sew edges together by hand.
8. Topstitch the waistcoat along all edges.
9. Make buttonholes into left edge. Sew buttons on right one.

Congratulations, your waistcoat is ready! :)