

If the pattern has a double line around it, the seam allowances are included.

Note: By default, seam allowances are NOT included (single line) and will need to be added when laying out and cutting details.

Seam Allowance: 1 cm on all seams; hem guidelines are printed on pattern.

Important! Please print all the paper patterns and lay them out at the width of fabric you plan to use (usually from 90 to 150 cm) to see how much fabric you will need.

Don't forget to take into account pieces to be duplicated or cut on a fold. When sewing the garment, pay attention to notches. They must match up with corresponding pieces.

6100 Men's jersey sports trousers with patch pockets

Recommendations on fabric: jersey or fleece approx. 1.6 m (size XS-M), approx. 2.2 m (size L-XXL) with a fabric width of 150

You will also need: fusible interfacing, 4.5 cm width elastic braid for waistband, cord for waistband, Velcro.

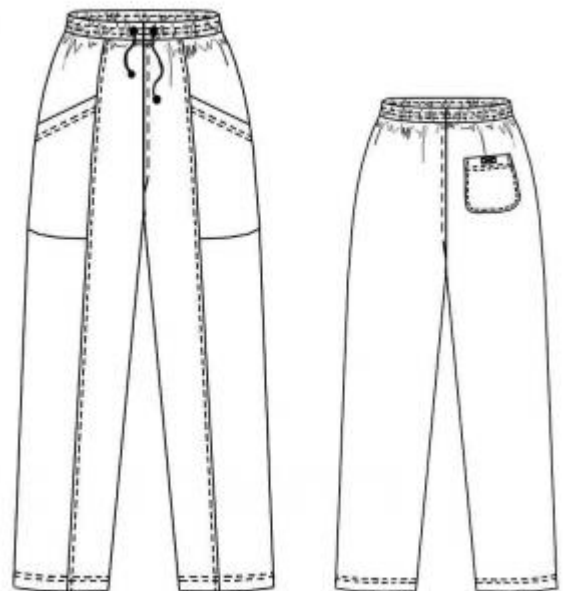
CUTTING:

The word, "beam" used on some patterns means "straight of grain". Some pieces will be cut on the fold, this is noted on the pattern piece. Mark all notches and other design features such as darts, pleats etc. from the pattern onto your fabric.

Seam allowance: 1 cm for all seams, 3 cm for garment hems.

Main fabric:

1. Front part – 2 pieces
2. Side part – 2 pieces
3. Back part – 2 pieces
4. Waistband – 1 piece
5. Front pocket – 2 pieces



6. Back pocket – 1 piece

INSTRUCTIONS:

Advice: sew knit pieces with special elastic/zig-zag stitches. If you use an overlock, cut seam allowances to 0.6-0.8 cm width. Topstitch hem allowances with double needle to save elasticity.

1. Press front pocket's upper edges under and topstitch it. Lay the pocket on side part along marking of pocket's lower edge, right sides together (pocket's upper edges towards trouser hems). Topstitch the pocket along lower edge. Fold the pocket upwards and press it.

2. Press back pocket's upper edge under and topstitch it. Press back pocket's allowances under. Topstitch Velcro. Topstitch the pocket in according to marking.

3. Stitch front seams catching pocket's edges. Topstitch front seams. Stitch side seams, then topstitch. Stitch middle seams, then topstitch along left part.

4. Mark lines of topstitching the elastic braid at waistband. Pierce 2 holes (at 8 cm distance) for cord between topstitching's at front part's middle seam level. Stitch separately waistband and elastic braid in ring. Insert elastic braid into waistband, stretch the braid to waistband's length and make 2 decorative stitches. Stitch the waistband to trousers catching elastic braid.

5. Press hems into wrong side.

6. Stitch inside leg edges.

7. Topstitch hems.

8. Press ready trousers.

9. Pull the cord into waistband.

Congratulations, your trousers are ready! :)