

If the pattern has a double line around it, the seam allowances are included.

Note: By default, seam allowances are NOT included (single line) and will need to be added when laying out and cutting details.

Seam Allowance: 1 cm on all seams; hem guidelines are printed on pattern.

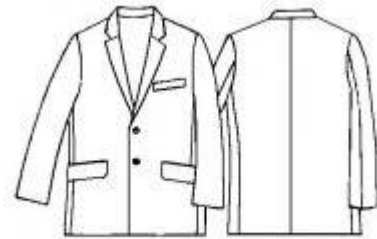
Important! Please print all the paper patterns and lay them out at the width of fabric you plan to use (usually from 90 to 150 cm) to see how much fabric you will need.

Don't forget to take into account pieces to be duplicated or cut on a fold. When sewing the garment, pay attention to notches. They must match up with corresponding pieces.

7019 Single breasted jacket for a boy

Recommendations on fabric: woolen costume fabric.

You will also need: lining that matches main fabric, fusible interfacing, 50 cm of welting of 90 cm wide, sleeve cups padding, 2 matching buttons of 20 mm in diameter, shoulder pads.



CUTTING:

The word, "beam" used on some patterns means "straight of grain". Some pieces will be cut on the fold, this is noted on the pattern piece. Mark all notches and other design features such as darts, pleats etc. from the pattern onto your fabric.

Seam allowances: 1cm for all seams unless otherwise specified.

Main fabric:

1. Back - 2 details
2. Side-body - 2 details
3. Front - 2 details
4. Back neckline facing - 1 detail
5. Button stand - 2 details
6. Upper part of sleeve - 2 details
7. Lower part of sleeve - 2 details
8. Collar - 2 details
9. Flap - 2 details

10. Off-set welt - 1 detail
11. Upper part of pocket bag - 2 details
12. Pocket facing - 4 details

Lining:

1. Back - 2 details
2. Side-body - 2 details
3. Front - 2 details
4. Upper part of sleeve - 2 details
5. Lower part of sleeve - 2 details
6. Lower part of pocket bag - 2 details
7. Flap - 4 details

ADDITIONALLY: From main fabric and lining cut two squares with length equal to off-set welt length + 2 cm of seam allowances; and width that is equal to half of off-set welt length + 2 cm of seam allowances.

Fusible interfacing: front part, button stand, collar, stand part of collar, pocket flap and offset welt.

NOTE: If you use checked fabric, pin details onto fabric so that squares coincide on seams.

INSTRUCTIONS:

1. Apply fusible interfacing to button stand, top and lower collars, stand part of collar, off-set welt, flaps, and pocket facings.

2. Slash pocket with off-set welt: Work on left front. Fold off-set welt in half lengthwise right sides together and overstretch short edges; turn out and press. Pin off-set welt, that is unfold downwards, from right side of the garment according to marks. Put pocket bag from lining on top of off-set welt; pin main fabric pocket bag, that is unfold upwards and stitch at 5 mm on both sides from the mark. Cut fabric through on center between stitches, shaping corner to ends of stitches, and turn pocket bags wrong side out. Topstitch loose edge of off-set welt onto pocket bag with zigzag stitch. Fold both pocket bags, align and sew together along contour. From right side stitch ends of off-set welt onto main garment.

3. Sew princess seams on front and press seam allowances apart.

4. Overstretch flap with lining, turn out and press.

5. Slash pocket with flap: Press facing in half lengthwise right sides together. Pin facings that are unfold to different sides, onto right side of main garment according to marks. Put

pocket bag from lining onto lower facing, put pocket bag of main fabric onto top facing, inserting the flap that is unfold upwards, between top facing and pocket bag from main fabric, and stitch at 5 mm on both sides from marking. Cut fabric through on center between stitches, shaping corner to ends of stitches, turn pocket bags wrong side out and make facings of 1 cm. Topstitch loose edges of the facings onto pocket bags with zig-zag stitch. Fold both pocket bags, align and sew together along contour. From wrong side topstitch ends of facing onto triangles of main fabric.

6. Sew back on center line.

7. Sew shoulder seams. Press seam allowances apart.

8. Sew side-bodies to back and front. Press seam allowances apart.

9. Sew shoulder seams of button stands and back neckline facing. Press seam allowances apart.

10. Sew lower collar into neckline, sew top collar to button stands back neckline facing, press seam allowances apart.

11. Put top collar, together with button stands onto main garment right sides together and overstretch buttons stand and collar, turn out and press, sew edge of top collar onto neckline.

12. Sew upper and elbow parts, but before press top part of sleeve; press apart seam allowances and turn sleeve right side out.

Congratulations, your jacket is ready! :)