

If the pattern has a double line around it, the seam allowances are included.

Note: By default, seam allowances are NOT included (single line) and will need to be added when laying out and cutting details.

Seam Allowance: 1 cm on all seams; hem guidelines are printed on pattern.

Important! Please print all the paper patterns and lay them out at the width of fabric you plan to use (usually from 90 to 150 cm) to see how much fabric you will need.

Don't forget to take into account pieces to be duplicated or cut on a fold. When sewing the garment, pay attention to notches. They must match up with corresponding pieces.

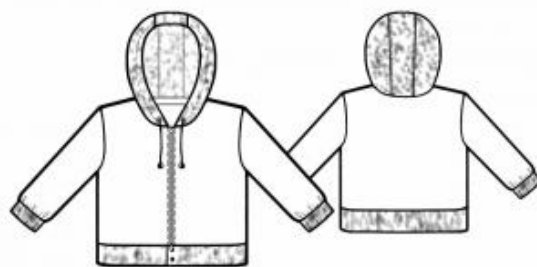
7131 Hoodie with Zipper and Snap Buttons

Recommendations on fabric: dense knit fabrics
(french terry, fleece).

You will also need: fusible interfacing, zipper (length is shown on front pattern piece); decorative cord, 2 caps for cord, 2 snaps, elastic of 2,5 cm wide.

CUTTING:

The word, "beam" used on some patterns means "straight of grain". Some pieces will be cut on the fold, this is noted on the pattern piece. Mark all notches and other design features such as darts, pleats etc. from the pattern onto your fabric.



Seam allowances: all seams – 1 cm; on armhole, sleeve curves, neckline, lower edge of hood – 0.7 cm; on outer edge of hood – 3 cm.

Main fabric:

1. Front – 2 details
2. Back – 1 detail
3. Lower back – 1 detail
4. Lower front – 2 details
5. Sleeve – 2 details
6. Cuff – 2 details
7. Hood – 2 details
8. Central part of hood – 1 detail
9. Buttonstand – 2 details
10. Back neckline facing – 1 detail

Interfacing: buttonstand, back neckline facing

INSTRUCTIONS:

Advice: sew knit pieces with special elastic/zig-zag stitches. If you use an overlock, cut seam allowances to 0.6-0.8 cm width. Topstitch hem allowances with double needle to save elasticity.

1. Apply interfacing to the buttonstand and back neckline facing. Apply interfacing to the hood where the holes will be. Apply interfacing to the seam allowance along the buttonstand (for the zipper).
2. Sew the side part of the hood to the center part and serge the seams. Topstitch the seam allowances onto the center part. Mark the hole locations and finish the holes on the hood. Turn the outer seam allowance of the hood to the wrong side, fold inside, and topstitch onto the hood.
3. Place the fronts right sides together, aligning the edges and measuring the length of the buttonstands. Sew the zipper to the edge of the buttonstand.
4. Sew the shoulder seams. Serge the seams and press toward the back.
5. Sew the shoulder seams of the facing and buttonstand. Serge the outer edges of the buttonstands and facing. Place the buttonstand onto the right side of the front, right side down, and stitch along the buttonstand line and neckline, inserting the hood between them. Topstitch from the front side. Trim seam allowances on curves. Turn the buttonstands to the wrong side and press. Topstitch along the buttonstand, 0.5 cm from the zipper.
6. Sew the sleeve into the open armhole. Sew and serge the side seams and sleeve seams in one step.
7. Sew the cuff into a ring, leaving an opening for the elastic. Fold the cuff in half lengthwise, wrong sides together, and sew to the sleeve. Serge the seam.
8. Sew the side seams of the lower back and front parts. Press the seams open. Sew the upper edge of the lower front to the sweatshirt. Reinforce the corners of the lower pieces. Turn the inner edge inside and topstitch into the top edge joining seam.
9. Attach the snaps on the lower front pieces according to the markings (depending on gender, the top of the snap can be on the left or right side). Insert the cord into the hood holes and attach the cord caps. Insert the elastic into the cuff and secure it.

Congratulations, your hoodie is ready! :)