

If the pattern has a double line around it, the seam allowances are included.

Note: By default, seam allowances are NOT included (single line) and will need to be added when laying out and cutting details.

Seam Allowance: 1 cm on all seams; hem guide lines are printed on pattern

Important! Please print all the paper patterns and lay them out at the width of fabric you plan to use (usually from 90 to 150 cm) to see how much fabric you will need.

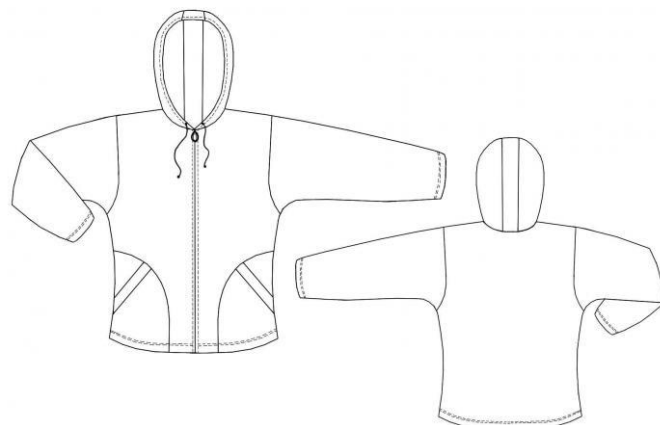
Don't forget to take into account pieces to be duplicated or cut on a fold.

When sewing the garment, pay attention to notches. They must match up with corresponding pieces.

7154 Hoodie with patch pockets

Recommendations on fabric: napped knit fabric (jersey, stretchy velvet, fleece).

You will also need: fusible interfacing; 1 separable zipper (the length of zipper depends on front's length); elastic cord for hood; 2 caps for the cord



CUTTING:

The word, "beam" used on some patterns means "straight of grain". Some pieces will be cut on the fold, this is noted on the pattern piece. Mark all notches and other design features such as darts, pleats etc. from the pattern onto your fabric.

Main fabric:

1. Front – 2 pieces
2. Back – 1 piece
3. Sleeve – 2 pieces
4. Side part – 2 pieces
5. Hood – 2 pieces
6. Central part of hood – 1 detail

7. Front stand – 2 details
8. Pocket sacking – 2 details
9. Off-set welt – 2 details

Advice: Knit fabric pieces are sewn together with special stretch-stitch or narrow zig-zag stitch. Seam allowances on the hem are stitched with twin needles to save stretchiness. Pieces can also be sewn together with 3 or 4 – threads serger. When serging, cut seam allowances to 0.6 – 0.8 cm.

INSTRUCTIONS:

1. Patch pocket with off-set welt.

Apply interfacing to off-set welt, fold in half and press. Stitch off-set welt to pocket sacking. Press sackings.

2. Assembly.

Lay ready patch pocket on side part according to marks and fasten on contour. Stitch side part to front, sewing patch pocket at the same time. Stitch connecting seam. Sew shoulder seams. Sew sleeve into open armhole. Sew side seams, sewing sleeve seam at the same time. Sew parts of the hood. Serge holes on hood according to marks. Turn inside and topstitch seam allowance on the front edge of the hood. Sew hood into the neckline.

3. Zipper.

Place zipper on front stand edge right sides together (zipper blades are turned from the stand). Overstitch front edges with front stand, sewing zipper at the same time. Overstitch the neckline with the front stand and topstitch it onto the shoulder seam.

4. Press the hem of garment and hem of sleeves. Stitch the hem of the garment and hem of sleeves.

5. Press ready jacket.

6. Set cord into the hood.

Congratulations, the hoodie is ready!