

If the pattern has a double line around it, the seam allowances are included.

Note: By default, seam allowances are NOT included (single line) and will need to be added when laying out and cutting details.

Seam Allowance: 1 cm on all seams; hem guidelines are printed on pattern.

Important! Please print all the paper patterns and lay them out at the width of fabric you plan to use (usually from 90 to 150 cm) to see how much fabric you will need.

Don't forget to take into account pieces to be duplicated or cut on a fold. When sewing the garment, pay attention to notches. They must match up with corresponding pieces.

8000 Free pattern dress

Recommendations on fabric: natural or blended dress fabric.

You will also need: invisible zipper, fusible interfacing.

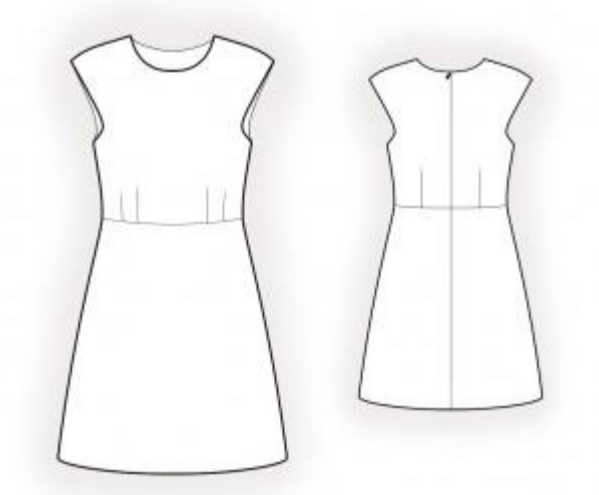
CUTTING:

The word, "beam" used on some patterns means "straight of grain". Some pieces will be cut on the fold, this is noted on the pattern piece. Mark all notches and other design features such as darts, pleats etc. from the pattern onto your fabric.

Seam allowance: All seams - 1 cm, hem of the garment - 3 cm.

Main fabric:

1. Back bodice - cut 2
2. Front bodice - cut 1 on fold
2. Back skirt - cut 2
4. Front skirt - cut 1 on fold
5. Back neckline facing – cut 2, cut 2 of interfacing
6. Front neckline facing – cut 1, cut 1 of interfacing
7. Back armhole facing – cut 2, cut 2 of interfacing
8. Front armhole facing - cut 2, cut 2 of interfacing



INSTRUCTIONS:

1. Apply interfacing to all facings.
2. Sew waist darts on bodice front according to markers. Press darts towards center. 3. Sew darts on bodice back. Press darts towards center.
4. Stitch skirt backs to bodice backs. Serge seam edge and press toward skirt.
5. Stitch front skirt to front bodice. Serge seam edge and press toward skirt.
6. Sew center seam of back section from the «zipper» notch up to hem. Press seam allowances open. Press opening for zipper. Serge edges.
7. Sew in invisible zipper according to zipper installation instructions.
8. Sew shoulder seams and side seams. Serge edges and press seam allowances towards back.
9. Sew front and back neck facings together at side seams, press seam allowances open. Serge outer edges.
10. Sew the neck facing to the neckline of bodice, right sides together. Trim and clip into seam allowance for ease. Press seams up toward facing. Turn facing to inside, Press. Slip-stitch center edges of the facing to zipper allowance. Tack facing to shoulder seams. Topstitch around neckline if desired.
11. Sew front and back armhole facings together, press seams open. Serge outer edges.
12. With right sides together, sew armhole facings to armholes, matching seams, and notches. Trim and clip into seam allowance for ease. Press seam toward facing. Turn facing to inside, tack at shoulder seam and side seam. Topstitch around armhole if desired.
13. Turn under hem, press. Topstitch or hem by hand.

Congratulations, your dress is ready! :)