

If the pattern has a double line around it, the seam allowances are included.

**Note:** By default, seam allowances are NOT included (single line) and will need to be added when laying out and cutting details.

Seam Allowance: 1 cm on all seams; hem guidelines are printed on pattern.

**Important!** Please print all the paper patterns and lay them out at the width of fabric you plan to use (usually from 90 to 150 cm) to see how much fabric you will need.

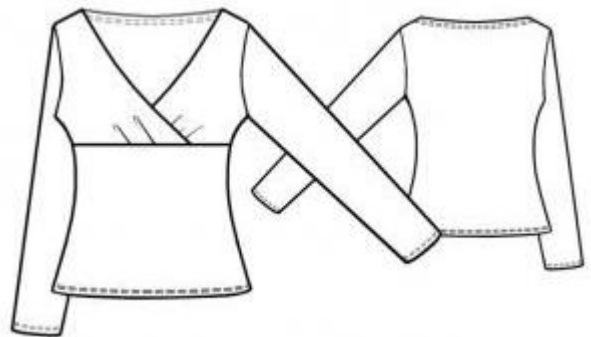
Don't forget to take into account pieces to be duplicated or cut on a fold. When sewing the garment, pay attention to notches. They must match up with corresponding pieces.

## 8004 Jersey blouse. Free pattern.

Recommendations on fabric: natural / mixed knitted fabric of medium stretchiness.

### CUTTING:

The word, "beam" used on some patterns means "straight of grain". Some pieces will be cut on the fold, this is noted on the pattern piece. Mark all notches and other design features such as darts, pleats etc. from the pattern onto your fabric.



Seam allowance: hem and lower edge of sleeve – 2.0 cm, other seam allowances - 1 cm.

### Main fabric:

1. Back – cut 1
2. Lower front – cut 1
3. Upper front – cut 2
4. Sleeve – cut 2

### Advice:

Knitted fabric pieces are sewn together with special elastic or narrow zig-zag stitch. Seam allowance on hems can be stitched with twin needles to save stretchiness. Pieces can also be sewn together with a serger. When serging, cut seam allowances to 0.6 – 0.8 cm.

## INSTRUCTIONS:

1. Serge seam allowance of both upper front neckline edges. Turn seam allowance onto wrong side, press and topstitch. Make pleats according to markers.
2. Put right upper part of the front onto left one and sew them together. Stitch lower part of the front to upper part, serge and press seam allowances.
3. Sew shoulder seams. Attention: back shoulder edge is 1 cm longer than front shoulder edge (that is the allowance for back part neckline). Press seam allowances towards back part.
4. Sew side seams. Serge and press seam allowances.
5. Sew edges of sleeves. Serge and press seam allowances.
6. Sew sleeves into armholes, matching the notches. Serge and press seam allowances.
7. Serge hem of garment, lower edge of sleeve and back part neckline edge. Fold seam allowances to wrong side, press and topstitch.

Congratulations, your blouse is ready! :)